

# NUMBER OF INHABITANTS

## Georgia

### LIST OF TABLES

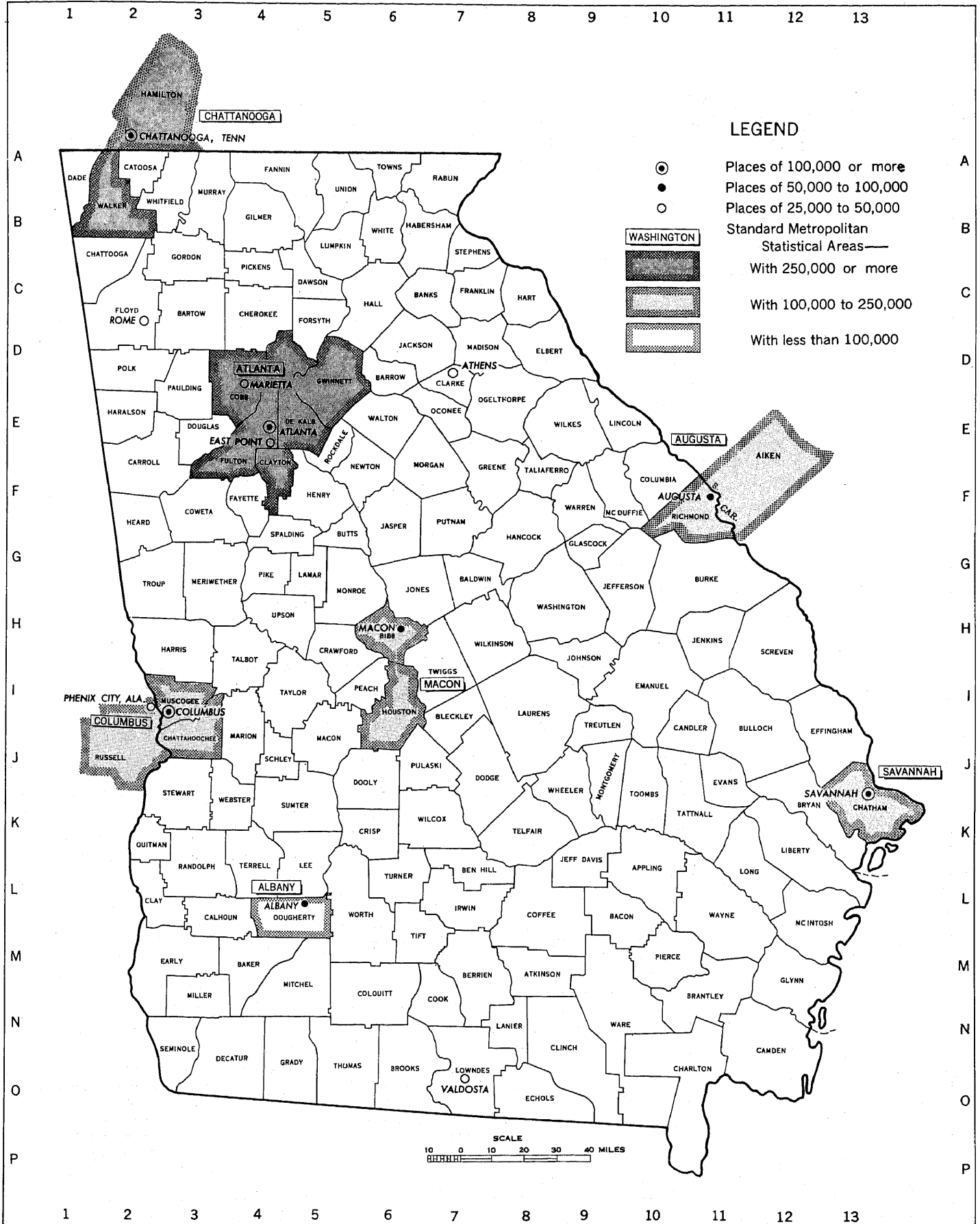
[Page numbers listed here omit the State prefix number which appears as part of the page number for each page. The prefix for this State is 12]

Table	Page
1.—Population of the State, urban and rural: 1790 to 1960.....	9
2.—Population in groups of places according to size: 1960 and 1950.....	9
3.—Population in groups of places according to size: 1900 to 1960.....	10
4.—Population in incorporated and unincorporated places according to size: 1960.....	11
5.—Population of incorporated places of 10,000 or more from earliest census to 1960.....	11
6.—Area and population of counties, urban and rural: 1960 and 1950.....	13
7.—Population of counties, by census county divisions: 1960.....	15
8.—Population of all incorporated places and of unincorporated places of 1,000 or more: 1940 to 1960.....	20
9.—1960 population of areas annexed between 1950 and 1960 by incorporated places having 2,500 inhabitants or more in 1950.....	23
10.—Population of urbanized areas: 1960 and 1950.....	24
11.—Population of standard metropolitan statistical areas: 1960 and 1950.....	25
12.—Population of the State and of standard metropolitan statistical areas, by type of residence: 1960.....	25

### LIST OF MAPS

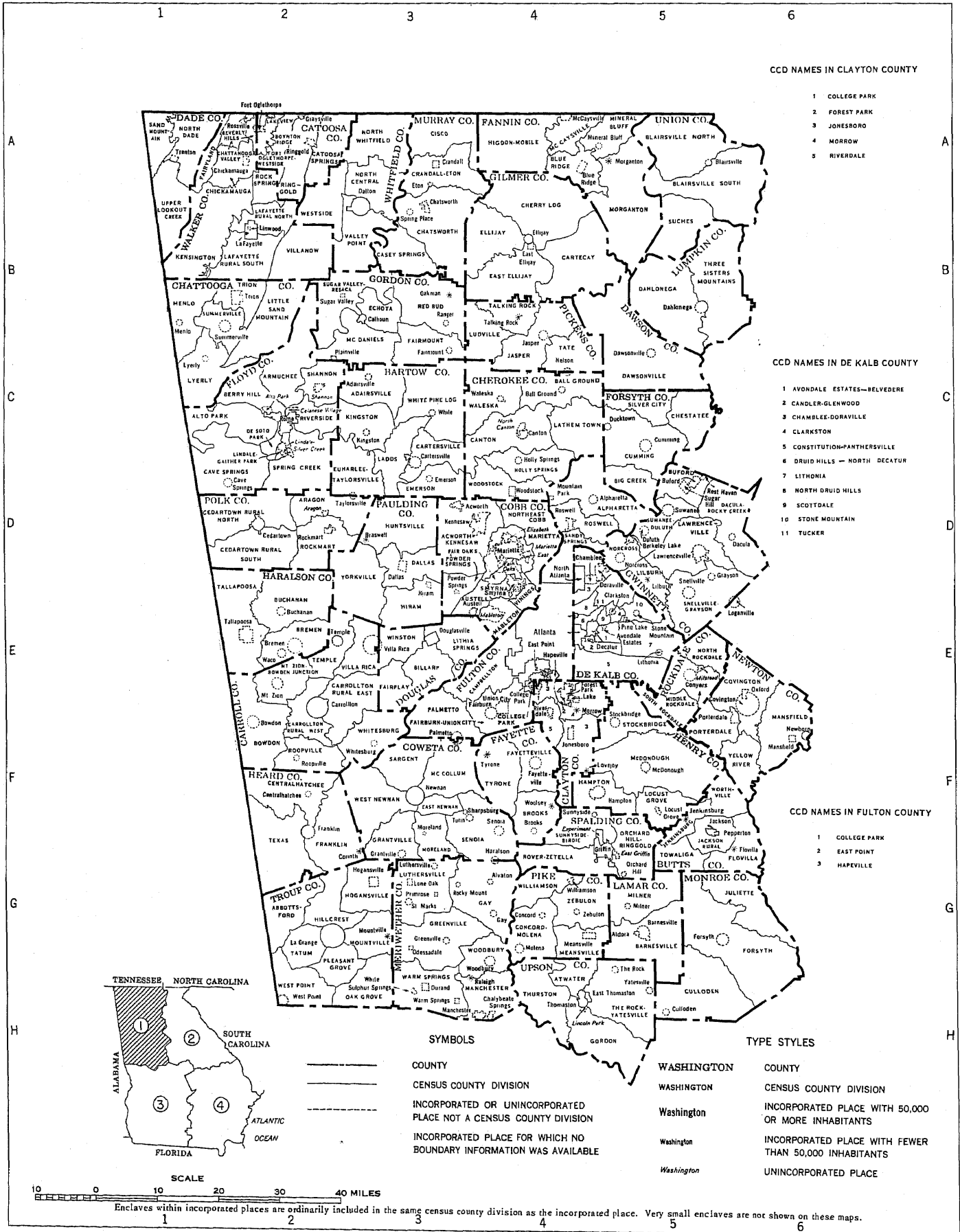
The State, showing counties, places of 25,000 or more, and standard metropolitan statistical areas.....	3
The State, showing census county divisions.....	4
Urbanized areas (separate map for each area).....	26

# GEORGIA— COUNTIES, PLACES OF 25,000 OR MORE, AND STANDARD METROPOLITAN STATISTICAL AREAS



# GEORGIA—SECTION 1

## CENSUS COUNTY DIVISIONS



**CCD NAMES IN CLAYTON COUNTY**

- 1 COLLEGE PARK
- 2 FOREST PARK
- 3 JONESBORO
- 4 MORROW
- 5 RIVERDALE

**CCD NAMES IN DE KALB COUNTY**

- 1 AVONDALE ESTATES—BELVEDERE
- 2 CANDLER-GLENWOOD
- 3 CHAMBLEE-DORAVILLE
- 4 CLARKSTON
- 5 CONSTITUTION-PANTHERSVILLE
- 6 DRUID HILLS — NORTH DECATUR
- 7 LITHONIA
- 8 NORTH DRUID HILLS
- 9 SCOTSDALE
- 10 STONE MOUNTAIN
- 11 TUCKER

**CCD NAMES IN FULTON COUNTY**

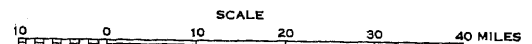
- 1 COLLEGE PARK
- 2 EAST POINT
- 3 HAPEVILLE

**SYMBOLS**

- COUNTY
- CENSUS COUNTY DIVISION
- INCORPORATED OR UNINCORPORATED PLACE NOT A CENSUS COUNTY DIVISION
- INCORPORATED PLACE FOR WHICH NO BOUNDARY INFORMATION WAS AVAILABLE

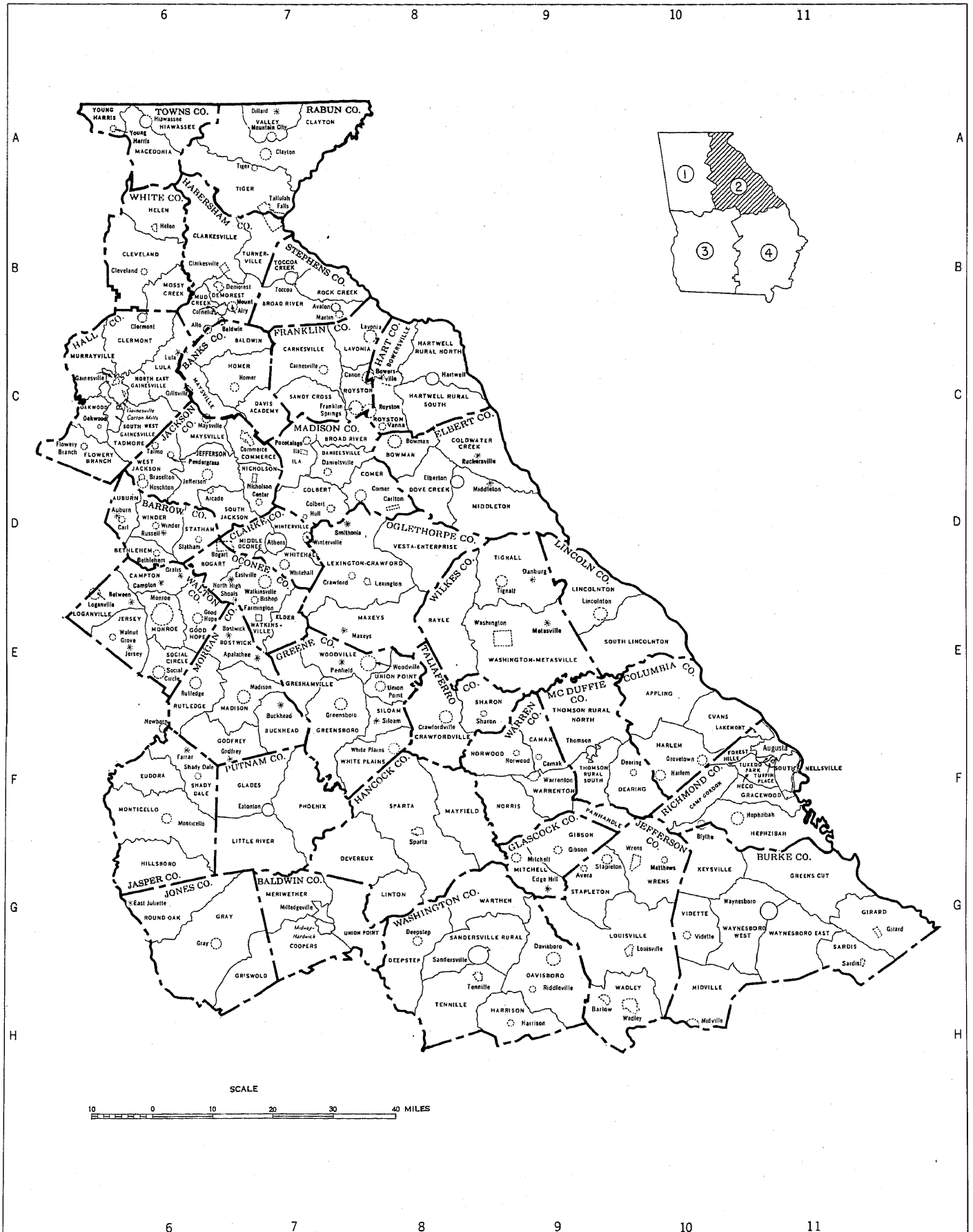
**TYPE STYLES**

- WASHINGTON** COUNTY
- WASHINGTON** CENSUS COUNTY DIVISION
- Washington* INCORPORATED PLACE WITH 50,000 OR MORE INHABITANTS
- Washington* INCORPORATED PLACE WITH FEWER THAN 50,000 INHABITANTS
- Washington* UNINCORPORATED PLACE



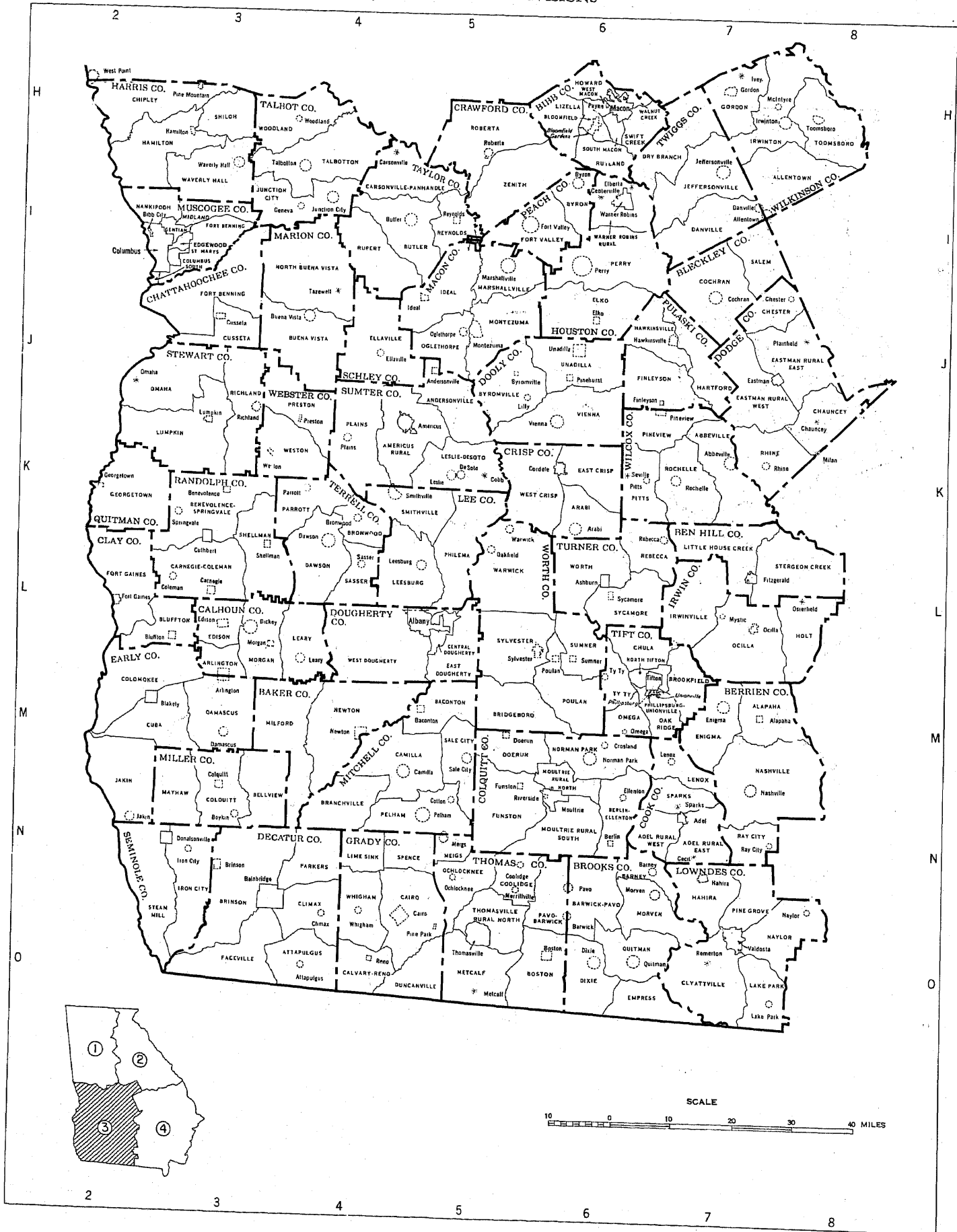
Enclaves within incorporated places are ordinarily included in the same census county division as the incorporated place. Very small enclaves are not shown on these maps.

# GEORGIA—SECTION 2 CENSUS COUNTY DIVISIONS



# GEORGIA—SECTION 3

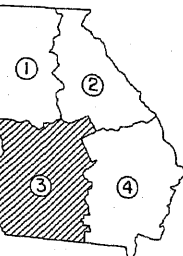
## CENSUS COUNTY DIVISIONS



H  
I  
J  
K  
L  
M  
N  
O

2 3 4 5 6 7 8

SCALE  
0 10 20 30 40 MILES



2 3 4 5 6 7 8

GEORGIA—SECTION 4  
CENSUS COUNTY DIVISIONS

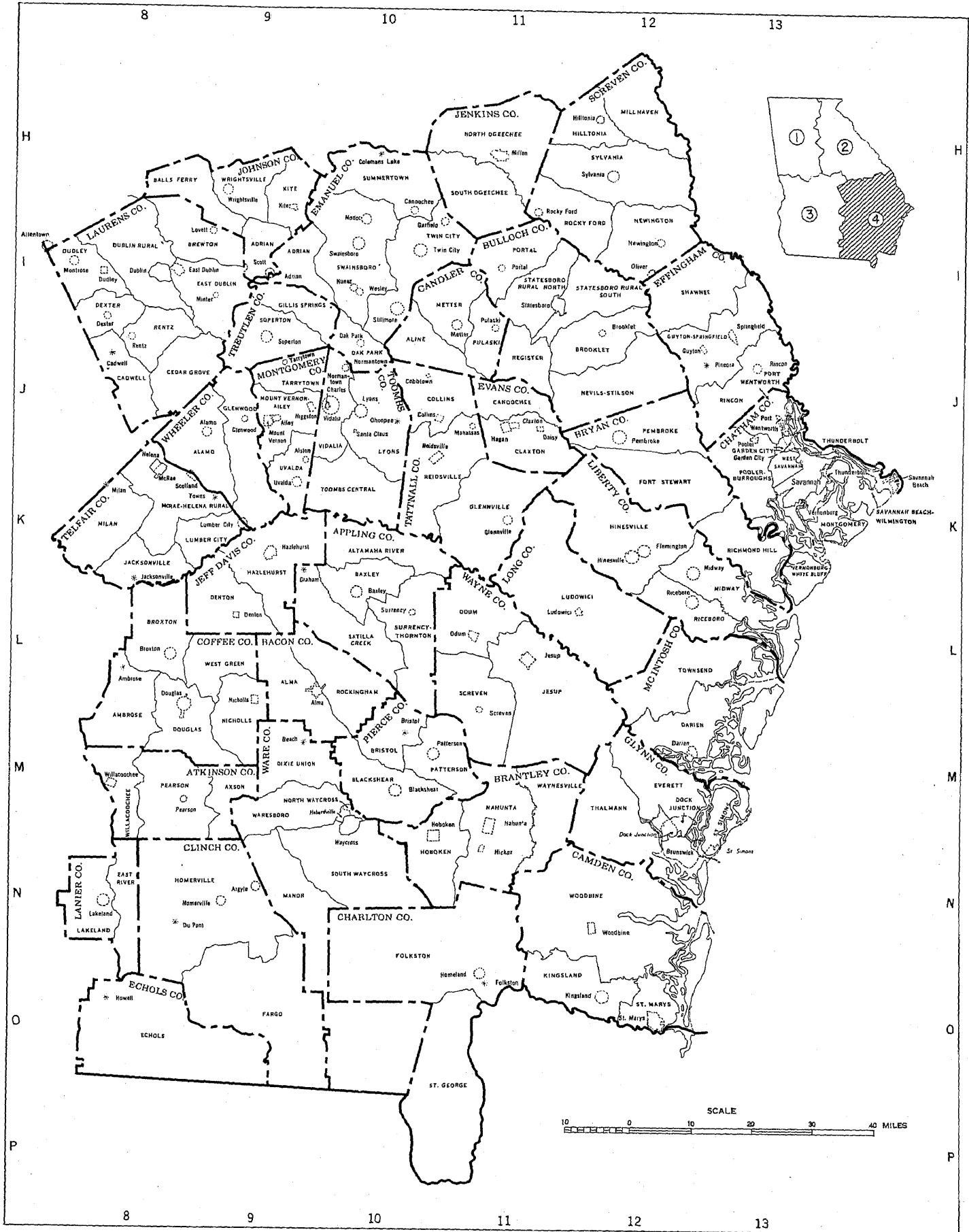


Table 1.—POPULATION OF THE STATE, URBAN AND RURAL: 1790 TO 1960

[For description of current and previous urban definitions, see text. Minus sign (-) denotes decrease]

Census date	The State			Urban territory				Rural territory			Percent of total	
	Population	Increase over preceding census		Number of urban places	Population	Increase over preceding census		Population	Increase over preceding census		Urban	Rural
		Number	Percent			Number	Percent		Number	Percent		
Current urban definition:												
1960 (Apr. 1)	1,394,116	498,538	14.5	124	2,180,236	620,789	39.8	1,762,880	-122,251	-6.5	55.3	44.7
1950 (Apr. 1)	3,444,578	320,855	10.3	106	1,559,447	...	...	1,885,131	...	...	45.3	54.7
Previous urban definition:												
1960 (Apr. 1)	1,394,116	498,538	14.5	120	1,963,012	536,806	37.6	1,980,104	-38,268	-1.9	49.8	50.2
1950 (Apr. 1)	3,444,578	320,855	10.3	103	1,426,206	352,398	32.8	2,018,372	-31,543	-1.5	41.4	58.6
1940 (Apr. 1)	3,123,723	215,217	7.4	78	1,073,808	178,316	19.9	2,049,915	36,901	1.8	34.4	65.6
1930 (Apr. 1)	2,908,506	12,674	0.4	64	895,492	167,633	23.0	2,013,014	-154,959	-7.1	30.8	69.2
1920 (Jan. 1)	2,895,832	286,711	11.0	59	727,859	189,209	35.1	2,167,973	97,502	4.7	25.1	74.9
1910 (Apr. 15)	2,609,121	392,790	17.7	45	538,650	192,268	55.5	2,070,471	200,522	10.7	20.6	79.4
1900 (June 1)	2,216,331	378,978	20.6	31	346,382	88,910	34.5	1,869,949	290,068	18.4	15.6	84.4
1890 (June 1)	1,827,353	295,173	19.1	22	257,472	112,382	77.5	1,579,881	182,791	13.1	14.0	86.0
1880 (June 1)	1,542,180	358,071	30.2	14	145,090	45,037	45.0	1,397,090	313,034	28.9	9.4	90.6
1870 (June 1)	1,184,109	126,823	12.0	10	100,053	24,587	32.6	1,084,056	102,236	10.4	8.4	91.6
1860 (June 1)	1,057,286	151,101	16.7	9	75,466	36,472	93.5	981,820	114,629	13.2	7.1	92.9
1850 (June 1)	906,185	214,793	31.1	5	38,994	14,336	58.1	867,191	200,457	30.1	4.3	95.7
1840 (June 1)	691,392	174,569	33.8	4	24,658	10,645	76.0	666,734	163,924	32.6	3.6	96.4
1830 (June 1)	516,823	175,834	51.6	2	14,013	6,490	86.3	502,810	169,344	50.8	2.7	97.3
1820 (Aug. 7)	340,989	88,556	35.1	1	7,523	2,308	44.3	333,466	86,248	34.9	2.2	97.8
1810 (Aug. 6)	252,433	89,747	55.2	1	5,215	69	1.3	247,218	89,678	56.9	2.1	97.9
1800 (Aug. 4)	162,686	80,138	97.1	1	5,146	...	...	157,540	74,992	90.8	3.2	96.8
1790 (Aug. 2)	82,548	...	...	...	...	...	...	82,548	...	...	...	100.0

<sup>1</sup> Barwell Island, Beaufort County, S.C., ceded to Chatham County, Ga., by Federal action in 1958.

<sup>2</sup> Includes 279,723 persons in urban territory outside urban places.

<sup>3</sup> Includes 167,338 persons in urban territory outside urban places.

<sup>4</sup> Revised since publication of 1950 reports.

<sup>5</sup> Includes population of areas now in Alabama and Mississippi.

<sup>6</sup> No population returned for that part of Georgia now in Alabama and Mississippi.

Table 2.—POPULATION IN GROUPS OF PLACES ACCORDING TO SIZE: 1960 AND 1950

[Percent not shown where less than 0.1]

Type of area and size of place	1960				1950			
	Number of places	Population	Percent of total population	Percent of total	Number of places	Population	Percent of total population	Percent of total
The State	...	3,943,116	100.0	...	...	3,444,578	100.0	...
URBAN								
Total	( <sup>1</sup> )	2,180,236	55.3	100.0	( <sup>2</sup> )	1,559,447	45.3	100.0
Within urbanized areas	...	1,372,447	34.8	62.9	...	918,738	26.7	58.9
Central cities, total	6	949,759	24.1	43.6	5	672,323	19.5	43.1
Cities of 1,000,000 or more	...	...	...	...	...	...	...	...
Cities of 500,000 to 1,000,000	...	...	...	...	...	...	...	...
Cities of 250,000 to 500,000	1	487,455	12.4	22.4	1	331,314	9.6	21.2
Cities of 100,000 to 250,000	2	266,024	6.7	12.2	1	119,638	3.5	7.7
Cities of 50,000 to 100,000	3	196,280	5.0	9.0	3	221,371	6.4	14.2
Cities under 50,000	...	...	...	...	...	...	...	...
Urban fringes, total	...	422,688	10.7	19.4	...	246,415	7.2	15.8
Places of 2,500 or more	11	142,965	3.6	6.6	7	79,077	2.3	5.1
Places of 100,000 or more	...	...	...	...	...	...	...	...
Places of 50,000 to 100,000	...	...	...	...	...	...	...	...
Places of 25,000 to 50,000	1	35,633	0.9	1.6	...	...	...	...
Places of 10,000 to 25,000	5	82,439	2.1	3.8	3	57,250	1.7	3.7
Places of 5,000 to 10,000	2	12,086	0.3	0.6	2	14,490	0.4	0.9
Places of 2,500 to 5,000	3	12,807	0.3	0.6	2	7,337	0.2	0.5
Places under 2,500	7	10,510	0.3	0.5	7	7,474	0.2	0.5
Places of 2,000 to 2,500	1	2,251	0.1	0.1	...	...	...	...
Places of 1,500 to 2,000	4	6,700	0.2	0.3	1	1,557	...	0.1
Places of 1,000 to 1,500	1	1,213	...	0.1	4	4,925	0.1	0.3
Places under 1,000	1	346	...	...	2	992	...	0.1
Other urban territory	...	269,213	6.8	12.3	...	159,864	4.6	10.3
Outside urbanized areas	107	807,789	20.5	37.1	94	640,709	18.6	41.1
Places of 25,000 or more	4	119,798	3.0	5.5	4	113,975	3.3	7.3
Places of 10,000 to 25,000	18	286,982	7.3	13.2	12	181,950	5.3	11.7
Places of 5,000 to 10,000	27	192,799	4.9	8.8	19	138,583	4.0	8.9
Places of 2,500 to 5,000	58	208,210	5.3	9.5	59	206,221	6.0	13.2
RURAL								
Total	...	1,762,880	44.7	100.0	...	1,885,131	54.7	100.0
Places of 1,000 to 2,500	115	179,921	4.6	10.2	110	168,784	4.9	8.9
Places of 2,000 to 2,500	21	47,603	1.2	2.7	16	34,816	1.0	1.8
Places of 1,500 to 2,000	35	59,795	1.5	3.4	38	65,290	1.9	3.5
Places of 1,000 to 1,500	59	72,523	1.8	4.1	56	68,678	2.0	3.6
Other rural territory	...	1,582,959	40.1	89.8	...	1,716,347	49.8	91.0
URBANIZED AREAS								
Total	7	1,372,447	34.8	100.0	6	918,738	26.7	100.0
Areas of 1,000,000 or more	...	...	...	...	...	...	...	...
Areas of 500,000 to 1,000,000	1	768,125	19.5	56.0	1	507,887	14.7	55.3
Areas of 250,000 to 500,000	...	...	...	...	...	...	...	...
Areas of 100,000 to 250,000	5	545,969	13.8	39.8	3	233,278	6.8	25.4
Areas under 100,000	1	58,333	1.5	4.3	2	177,573	5.2	19.3

<sup>1</sup> There were 124 places of 2,500 or more.

<sup>2</sup> There were 106 places of 2,500 or more.

Table 3.—POPULATION IN GROUPS OF PLACES ACCORDING TO SIZE: 1900 TO 1960

Subject and size of place	1960		1950		1940	1930	1920	1910	1900
	Current urban definition	Previous urban definition	Current urban definition	Previous urban definition <sup>1</sup>					
NUMBER OF PLACES									
Urban territory.....	131	120	113	103	78	64	59	45	31
Places of 2,500 or more.....	124	120	106	103	78	64	59	45	31
Places of 1,000,000 or more.....	...	...	...	...	...	...	...	...	...
Places of 500,000 to 1,000,000.....	...	...	...	...	...	...	...	...	...
Places of 250,000 to 500,000.....	1	2	1	1	1	1	1	1	1
Places of 100,000 to 250,000.....	2	3	3	3	4	3	3	3	2
Places of 50,000 to 100,000.....	5	6	4	5	1	1	1	2	1
Places of 25,000 to 50,000.....	23	27	15	16	14	10	7	5	3
Places of 10,000 to 25,000.....	29	26	21	21	19	16	14	14	7
Places of 5,000 to 10,000.....	61	55	61	56	39	33	33	22	18
Places of 2,500 to 5,000.....	7	...	7	...	...	...	...	...	...
Places under 2,500.....	7	...	7	...	...	...	...	...	...
Rural territory.....	482	478	498	484	513	529	516	516	344
Places of 1,000 to 2,500.....	115	110	110	94	94	91	87	85	56
Places under 1,000.....	367	368	388	390	419	438	429	431	288
Cumulative summary:									
Places of 1,000,000 or more.....	...	...	...	...	...	...	...	...	...
Places of 500,000 or more.....	...	...	...	...	...	...	...	...	...
Places of 250,000 or more.....	1	1	1	1	1	1	1	1	1
Places of 100,000 or more.....	3	3	2	2	1	1	1	1	...
Places of 50,000 or more.....	6	6	5	5	5	4	4	2	2
Places of 25,000 or more.....	11	12	9	10	6	5	5	4	3
Places of 10,000 or more.....	34	39	24	26	20	15	12	9	6
Places of 5,000 or more.....	63	65	45	47	39	31	26	23	13
Places of 2,500 or more.....	124	120	106	103	78	64	59	45	31
POPULATION									
Urban territory.....	2,180,236	1,963,012	1,559,447	1,426,206	1,073,808	895,492	727,859	538,650	346,382
Places of 2,500 or more.....	1,900,513	1,963,012	1,392,109	1,426,206	1,073,808	895,492	727,859	538,650	346,382
Places of 1,000,000 or more.....	...	...	...	...	...	...	...	...	...
Places of 500,000 to 1,000,000.....	...	...	...	...	...	...	...	...	...
Places of 250,000 to 500,000.....	487,455	487,455	331,314	331,314	302,288	270,366	...	...	...
Places of 100,000 to 250,000.....	266,024	266,024	119,638	119,638	...	...	200,616	154,839	...
Places of 50,000 to 100,000.....	196,280	196,280	221,371	221,371	273,060	199,195	188,795	65,064	144,116
Places of 25,000 to 50,000.....	155,431	180,452	113,975	140,769	26,282	43,131	31,125	81,705	39,441
Places of 10,000 to 25,000.....	369,421	447,611	239,180	264,043	206,943	153,017	101,857	72,233	51,131
Places of 5,000 to 10,000.....	204,885	184,372	153,073	153,073	129,552	113,785	95,937	90,403	47,757
Places of 2,500 to 5,000.....	221,017	200,818	213,598	195,998	135,683	115,998	109,529	74,406	63,937
Places under 2,500.....	10,510	...	7,474	...	...	...	...	...	...
Other urban territory.....	269,213	...	159,864	...	...	...	...	...	...
Rural territory.....	1,762,880	1,980,104	1,885,131	2,018,372	2,049,915	2,013,014	2,167,973	2,070,471	1,869,949
Places of 1,000 to 2,500.....	179,921	171,574	168,784	144,635	146,357	143,903	133,726	131,865	83,190
Places under 1,000.....	125,967	126,313	138,590	139,582	148,830	155,841	163,069	153,938	110,490
Other rural territory.....	1,456,992	1,682,217	1,577,757	1,734,155	1,754,728	1,713,270	1,871,178	1,784,668	1,676,269
Cumulative summary:									
Places of 1,000,000 or more.....	...	...	...	...	...	...	...	...	...
Places of 500,000 or more.....	...	...	...	...	...	...	...	...	...
Places of 250,000 or more.....	487,455	487,455	331,314	331,314	302,288	270,366	...	...	...
Places of 100,000 or more.....	753,479	753,479	450,952	450,952	302,288	270,366	200,616	154,839	...
Places of 50,000 or more.....	949,759	949,759	672,323	672,323	575,348	469,561	389,411	219,903	144,116
Places of 25,000 or more.....	1,103,190	1,130,211	786,298	813,092	601,630	512,692	420,536	301,608	183,557
Places of 10,000 or more.....	1,474,611	1,577,822	1,025,478	1,077,135	808,573	665,709	522,393	373,841	234,688
Places of 5,000 or more.....	1,679,496	1,762,194	1,178,551	1,230,208	938,125	779,494	618,330	464,244	282,445
Places of 2,500 or more.....	1,900,513	1,963,012	1,392,109	1,426,206	1,073,808	895,492	727,859	538,650	346,382
PERCENT OF TOTAL POPULATION									
Urban territory.....	55.3	49.8	45.3	41.4	34.4	30.8	25.1	20.6	15.6
Places of 2,500 or more.....	48.2	49.8	40.4	41.4	34.4	30.8	25.1	20.6	15.6
Places of 1,000,000 or more.....	...	...	...	...	...	...	...	...	...
Places of 500,000 to 1,000,000.....	...	...	...	...	...	...	...	...	...
Places of 250,000 to 500,000.....	12.4	12.4	9.6	9.6	9.7	9.3	...	...	...
Places of 100,000 to 250,000.....	6.7	6.7	3.5	3.5	...	...	6.9	5.9	...
Places of 50,000 to 100,000.....	5.0	5.0	6.4	6.4	8.7	6.8	6.5	2.5	6.5
Places of 25,000 to 50,000.....	3.9	4.6	3.3	4.1	0.8	1.5	1.1	3.1	1.8
Places of 10,000 to 25,000.....	9.4	11.4	6.9	7.7	6.6	5.3	3.5	2.8	2.3
Places of 5,000 to 10,000.....	5.2	4.7	4.4	4.4	4.1	3.9	3.3	3.5	2.2
Places of 2,500 to 5,000.....	5.6	5.1	6.2	5.7	4.3	4.0	3.8	2.9	2.9
Places under 2,500.....	0.3	...	0.2	...	...	...	...	...	...
Other urban territory.....	6.8	...	4.6	...	...	...	...	...	...
Rural territory.....	44.7	50.2	54.7	58.6	65.6	69.2	74.9	79.4	84.4
Places of 1,000 to 2,500.....	4.6	4.4	4.9	4.2	4.7	4.9	4.6	5.1	3.8
Places under 1,000.....	3.2	3.2	4.0	4.1	4.8	5.4	5.6	5.9	5.0
Other rural territory.....	37.0	42.7	45.8	50.3	56.2	58.9	64.6	68.4	75.6
Cumulative summary:									
Places of 1,000,000 or more.....	...	...	...	...	...	...	...	...	...
Places of 500,000 or more.....	...	...	...	...	...	...	...	...	...
Places of 250,000 or more.....	12.4	12.4	9.6	9.6	9.7	9.3	...	...	...
Places of 100,000 or more.....	19.1	19.1	13.1	13.1	9.7	9.3	6.9	5.9	...
Places of 50,000 or more.....	24.1	24.1	19.5	19.5	18.4	16.1	13.4	8.4	6.5
Places of 25,000 or more.....	28.0	28.7	22.8	23.6	19.3	17.6	14.5	11.6	8.3
Places of 10,000 or more.....	37.4	40.0	29.8	31.3	25.9	22.9	18.0	14.3	10.6
Places of 5,000 or more.....	42.6	44.7	34.2	35.7	30.0	26.8	21.4	17.8	12.7
Places of 2,500 or more.....	48.2	49.8	40.4	41.4	34.4	30.8	25.1	20.6	15.6

<sup>1</sup> Revised since publication of 1950 reports.



Table 4.—POPULATION IN INCORPORATED AND UNINCORPORATED PLACES ACCORDING TO SIZE: 1960

Size of place and urban-rural classification	All places		Incorporated places		Unincorporated places		Size of place and urban-rural classification	All places		Incorporated places		Unincorporated places	
	Number	Population	Number	Population	Number	Population		Number	Population	Number	Population	Number	Population
Total.....	613	2,216,911	592	2,140,779	21	76,132	In urbanized areas—Con.						
500,000 or more.....	...	...	...	...	...	...	5,000 to 10,000.....	2	12,086	2	12,086	...	...
250,000 to 500,000.....	1	487,455	1	487,455	...	...	2,500 to 5,000.....	3	12,807	3	12,807	...	...
100,000 to 250,000.....	2	266,024	2	266,024	...	...	2,000 to 2,500.....	1	2,251	1	2,251	...	...
50,000 to 100,000.....	3	196,280	3	196,280	...	...	1,500 to 2,000.....	4	6,700	4	6,700	...	...
25,000 to 50,000.....	5	155,431	5	155,431	...	...	1,000 to 1,500.....	1	1,213	1	1,213	...	...
20,000 to 25,000.....	6	133,509	6	133,509	...	...	500 to 1,000.....	...	...	...	...	...	...
10,000 to 20,000.....	17	235,912	16	219,003	1	16,909	200 to 500.....	1	346	1	346	...	...
5,000 to 10,000.....	29	204,885	26	184,372	3	20,513	Under 200.....	...	...	...	...	...	...
2,500 to 5,000.....	61	221,017	55	200,818	6	20,199	Other urban territory.....	107	807,789	97	750,168	10	57,621
2,000 to 2,500.....	22	49,854	20	45,320	2	4,534	25,000 to 50,000.....	4	119,798	4	119,798	...	...
1,500 to 2,000.....	39	66,495	32	54,588	7	11,907	20,000 to 25,000.....	4	88,014	4	88,014	...	...
1,000 to 1,500.....	60	73,736	58	71,666	2	2,070	10,000 to 20,000.....	14	198,968	13	182,059	1	16,909
500 to 1,000.....	90	61,906	90	61,906	...	...	5,000 to 10,000.....	27	192,799	24	172,286	3	20,513
200 to 500.....	154	49,814	154	49,814	...	...	2,500 to 5,000.....	58	208,210	52	188,011	6	20,199
Under 200.....	124	14,593	124	14,593	...	...	Rural territory.....	482	305,888	471	287,377	11	18,511
In urbanized areas.....	24	1,103,234	24	1,103,234	...	...	2,000 to 2,500.....	21	47,603	19	43,069	2	4,534
500,000 or more.....	...	...	...	...	...	...	1,500 to 2,000.....	35	59,795	28	47,888	7	11,907
250,000 to 500,000.....	1	487,455	1	487,455	...	...	1,000 to 1,500.....	59	72,523	57	70,453	2	2,070
100,000 to 250,000.....	2	266,024	2	266,024	...	...	500 to 1,000.....	90	61,906	90	61,906	...	...
50,000 to 100,000.....	3	196,280	3	196,280	...	...	200 to 500.....	153	49,468	153	49,468	...	...
25,000 to 50,000.....	1	35,633	1	35,633	...	...	Under 200.....	124	14,593	124	14,593	...	...
20,000 to 25,000.....	2	45,495	2	45,495	...	...							
10,000 to 20,000.....	3	36,944	3	36,944	...	...							

Table 5.—POPULATION OF INCORPORATED PLACES OF 10,000 OR MORE FROM EARLIEST CENSUS TO 1960

[Minus sign (-) denotes decrease]

Incorporated place and census year	Population	Increase over preceding census		Incorporated place and census year	Population	Increase over preceding census		Incorporated place and census year	Population	Increase over preceding census	
		Number	Percent			Number	Percent			Number	Percent
ALBANY:				AUGUSTA—Con.				COLLEGE PARK—Con.			
1960.....	55,890	24,735	79.4	1920.....	52,548	11,508	28.0	1930.....	6,604	2,982	82.3
1950.....	31,155	12,100	63.5	1910.....	41,040	1,599	4.1	1920.....	3,622	1,449	66.7
1940.....	19,055	4,548	31.4	1900.....	39,441	6,141	18.4	1910.....	2,173	1,656	320.3
1930.....	14,507	2,952	25.5	1890.....	33,300	11,409	52.1	1900.....	517	...	...
1920.....	11,555	3,365	41.1	1880.....	21,891	6,502	42.3				
1910.....	8,190	3,584	77.8	1870.....	15,389	2,896	23.2	COLUMBUS:			
1900.....	4,606	598	14.9	1860.....	12,493	3,045	32.2	1960.....	116,779	37,168	46.7
1890.....	4,008	792	24.6	1850.....	9,448	3,045	47.6	1950.....	79,611	26,331	49.4
1880.....	3,216	1,115	53.1	1840.....	6,403	...	...	1940.....	53,280	10,149	23.5
1870.....	2,101	483	29.9	1830.....	(2)	...	...	1930.....	43,131	12,006	38.6
1860.....	1,618	...	...	1820.....	(2)	...	...	1920.....	31,125	10,571	51.4
				1810.....	2,476	261	11.8	1910.....	20,554	2,940	16.7
				1800.....	2,215	...	...	1900.....	17,614	311	1.8
AMERICUS:								1890.....	17,303	7,180	70.9
1960.....	13,472	2,083	18.3	BADNERIDGE:				1880.....	10,123	2,722	36.8
1950.....	11,389	2,108	22.7	1960.....	12,714	5,152	68.1	1870.....	7,401	-2,220	-23.1
1940.....	9,281	521	5.9	1950.....	7,562	1,210	19.0	1860.....	9,621	3,679	61.9
1930.....	8,760	-250	-2.8	1940.....	6,352	211	3.4	1850.....	5,942	2,828	90.8
1920.....	9,010	947	11.7	1930.....	6,141	1,349	28.2	1840.....	3,114	...	...
1910.....	8,063	389	5.1	1920.....	4,792	575	13.6				
1900.....	7,674	1,276	19.9	1910.....	4,217	1,576	59.7	CORDELE:			
1890.....	6,398	2,763	76.0	1900.....	2,641	973	58.3	1960.....	10,609	1,147	12.1
1880.....	3,635	376	11.5	1890.....	1,668	232	16.2	1950.....	9,462	1,533	19.3
1870.....	3,259	...	...	1880.....	1,436	85	6.3	1940.....	7,929	1,049	15.2
				1870.....	1,351	-518	-27.7	1930.....	6,880	342	5.2
				1860.....	1,869	...	...	1920.....	6,538	655	11.1
								1910.....	5,883	2,410	69.4
ATHENS:				BRUNSWICK:				1900.....	3,473	1,895	120.1
1960.....	31,355	3,175	11.3	1960.....	21,703	3,749	20.9	1890.....	1,578	...	...
1950.....	28,180	7,530	36.5	1950.....	17,954	2,919	19.4				
1940.....	20,650	2,458	13.5	1940.....	15,035	1,013	7.2	DALTON:			
1930.....	18,192	1,444	8.6	1930.....	14,022	-391	-2.7	1960.....	17,868	1,900	11.9
1920.....	16,748	1,835	12.3	1920.....	14,413	4,231	41.6	1950.....	15,968	5,520	52.8
1910.....	14,913	4,668	45.6	1910.....	10,182	1,101	12.1	1940.....	10,448	2,288	28.0
1900.....	10,245	1,606	18.6	1900.....	9,081	622	7.4	1930.....	8,160	2,938	56.3
1890.....	8,639	2,540	41.6	1890.....	8,459	5,568	192.6	1920.....	5,222	-102	-1.9
1880.....	6,099	1,848	43.5	1880.....	2,891	543	23.1	1910.....	5,324	1,009	23.4
1870.....	4,251	403	10.5	1870.....	2,348	1,523	184.6	1900.....	4,315	1,269	41.7
1860.....	3,848	2,187	131.7	1860.....	825	...	...	1890.....	3,046	530	21.1
1850.....	1,661	...	...					1880.....	2,516	707	39.1
				CARROLLTON:				1870.....	1,809	160	9.7
ATLANTA:				1960.....	10,973	3,220	41.5	1860.....	1,649	...	...
1960.....	487,455	156,141	47.1	1950.....	7,753	1,539	24.8				
1950.....	331,314	29,026	9.6	1940.....	6,214	1,162	23.0	DECATUR:			
1940.....	302,288	31,922	11.8	1930.....	5,052	689	15.8	1960.....	22,026	391	1.8
1930.....	270,366	69,750	34.8	1920.....	4,363	1,066	32.3	1950.....	21,635	5,074	30.6
1920.....	200,616	45,777	29.6	1910.....	3,297	1,299	65.0	1940.....	16,561	3,285	24.7
1910.....	154,839	64,967	72.3	1900.....	1,998	547	37.7	1930.....	13,276	7,126	115.9
1900.....	89,872	24,339	37.1	1890.....	1,451	525	56.7	1920.....	6,150	3,684	149.4
1890.....	65,533	28,124	75.2	1880.....	926	...	...	1910.....	2,466	1,048	73.9
1880.....	37,409	15,620	71.7					1900.....	1,418	405	40.0
1870.....	21,789	12,235	128.1	COLLEGE PARK:				1890.....	1,013	374	58.5
1860.....	9,554	6,982	271.5	1960.....	23,469	8,934	61.5	1880.....	639	238	59.4
1850.....	2,572	...	...	1950.....	14,535	6,322	77.0	1870.....	401	...	...
				1940.....	8,213	1,609	24.4				

<sup>1</sup> Estimated.

<sup>2</sup> Not returned separately.

Table 5.—POPULATION OF INCORPORATED PLACES OF 10,000 OR MORE FROM EARLIEST CENSUS TO 1960—Con.

[Minus sign (-) denotes decrease]

Incorporated place and census year	Population	Increase over preceding census		Incorporated place and census year	Population	Increase over preceding census		Incorporated place and census year	Population	Increase over preceding census	
		Number	Percent			Number	Percent			Number	Percent
<b>DUBLIN:</b>				<b>MACON:</b>				<b>ROME--Con.</b>			
1960.....	13,814	3,582	35.0	1960.....	69,764	-488	-0.7	1910.....	12,099	4,808	65.9
1950.....	10,232	2,418	30.9	1950.....	70,252	12,387	21.4	1900.....	7,291	334	4.8
1940.....	7,814	1,133	17.0	1940.....	57,865	4,036	7.3	1890.....	6,957	3,080	79.4
1930.....	6,681	-1,026	-13.3	1930.....	53,829	834	1.6	1880.....	3,877	1,129	41.1
1920.....	7,707	1,912	33.0	1920.....	52,995	12,330	30.3	1870.....	2,748	-1,262	-31.5
1910.....	5,795	2,808	94.0	1910.....	40,665	17,393	74.7	1860.....	4,010	...	...
1900.....	2,987	2,125	246.5	1900.....	23,272	526	2.3				
1890.....	862	288	50.2	1890.....	22,746	9,997	78.4				
1880.....	574	...	...	1880.....	12,749	1,939	17.9				
				1870.....	10,810	2,563	31.1	<b>SAVANNAH:</b>			
<b>EAST POINT:</b>				1860.....	8,247	2,527	44.2	1960.....	149,245	29,607	24.7
1960.....	35,633	14,553	69.0	1850.....	5,720	1,793	45.7	1950.....	119,638	23,642	24.6
1950.....	21,080	8,677	70.0	1840.....	3,927	...	...	1940.....	95,996	10,972	12.9
1940.....	12,403	2,891	30.4					1930.....	85,024	1,772	2.1
1930.....	9,512	4,271	81.5	<b>MARIETTA:</b>				1920.....	83,252	18,188	28.0
1920.....	5,241	1,559	42.3	1960.....	25,565	4,878	23.6	1910.....	65,064	10,820	19.9
1910.....	3,682	2,367	180.0	1950.....	20,687	12,020	138.7	1900.....	54,244	11,055	25.6
1900.....	1,315	577	78.2	1940.....	8,667	1,029	13.5	1890.....	43,189	12,480	40.6
1890.....	738	...	...	1930.....	7,638	1,448	23.4	1880.....	30,709	2,474	8.8
				1920.....	6,190	241	4.1	1870.....	28,235	5,943	26.7
<b>FOREST PARK:</b>				1910.....	5,949	1,503	33.8	1860.....	22,292	6,980	45.6
1960.....	14,201	11,548	435.3	1900.....	4,446	1,062	31.4	1850.....	15,312	4,098	36.5
1950.....	2,653	2,076	359.8	1890.....	3,384	1,157	52.0	1840.....	11,214	...	...
1940.....	577	189	48.7	1880.....	2,227	339	18.0	1830.....	(1)	...	...
1930.....	388	80	26.0	1870.....	1,888	...	...	1820.....	7,523	2,308	44.3
1920.....	308	135	78.0					1810.....	5,215	69	1.3
1910.....	173	...	...					1800.....	5,146	...	...
				<b>MILLEDGEVILLE:</b>				<b>SMYRNA:</b>			
<b>GAINESVILLE:</b>				1960.....	11,117	2,282	25.8	1960.....	10,157	8,152	406.6
1960.....	16,523	4,587	38.4	1950.....	8,835	2,097	30.3	1950.....	2,005	565	39.2
1950.....	11,936	1,693	16.5	1940.....	6,778	1,244	22.5	1940.....	1,440	262	22.2
1940.....	10,243	1,619	18.8	1930.....	5,534	911	19.8	1930.....	1,178	387	48.9
1930.....	8,624	2,352	37.5	1920.....	4,619	234	5.3	1920.....	791	192	32.1
1920.....	6,272	347	5.9	1910.....	4,385	166	3.9	1910.....	599	361	151.7
1910.....	5,925	1,543	35.2	1900.....	4,219	897	27.0	1900.....	238	-178	-42.8
1900.....	4,382	1,180	36.9	1890.....	3,322	-478	-12.6	1890.....	416	157	60.6
1890.....	3,202	1,283	66.9	1880.....	3,800	1,050	38.2	1880.....	259	...	...
1880.....	1,919	1,447	306.6	1870.....	2,750	270	10.9	<b>THOMASVILLE:</b>			
1870.....	472	128	37.2	1860.....	2,480	264	11.9	1960.....	18,246	3,822	26.5
1860.....	344	...	...	1850.....	2,216	121	5.8	1950.....	14,424	1,741	13.7
				1840.....	2,095	...	...	1940.....	12,683	950	8.1
								1930.....	11,733	3,337	43.2
<b>GRIFFIN:</b>				<b>MOULTREE:</b>				1920.....	8,196	1,469	21.8
1960.....	21,735	7,753	55.4	1960.....	15,764	4,125	35.4	1910.....	6,727	1,405	26.4
1950.....	13,982	760	5.7	1950.....	11,639	1,492	14.7	1900.....	5,322	-192	-3.5
1940.....	13,222	2,901	28.1	1940.....	10,147	2,120	26.4	1890.....	5,514	2,959	115.8
1930.....	10,321	2,081	25.3	1930.....	8,027	1,238	18.2	1880.....	2,555	904	54.8
1920.....	8,240	762	10.2	1920.....	6,789	3,440	102.7	1870.....	1,651	...	...
1910.....	7,478	621	9.1	1910.....	3,349	1,128	50.8				
1900.....	6,857	2,354	52.3	1900.....	2,221	...	...	<b>VALDOSTA:</b>			
1890.....	4,503	883	24.4					1960.....	30,652	10,606	52.9
1880.....	3,620	199	5.8	<b>NEWMAN:</b>				1950.....	20,046	4,451	28.5
1870.....	3,421	566	19.8	1960.....	12,169	3,951	48.1	1940.....	15,595	2,113	15.7
1860.....	2,855	...	...	1950.....	8,218	1,036	14.4	1930.....	13,482	2,699	25.0
				1940.....	7,182	796	12.5	1920.....	10,783	3,127	40.8
<b>HAPEVILLE:</b>				1930.....	6,386	-651	-9.3	1910.....	7,656	2,043	36.4
1960.....	10,082	1,522	17.8	1920.....	7,037	1,489	26.8	1900.....	5,613	2,759	96.7
1950.....	8,560	3,501	69.2	1910.....	5,548	1,894	51.8	1890.....	2,854	1,339	88.4
1940.....	5,059	835	19.8	1900.....	3,654	795	27.8	1880.....	1,515	316	26.4
1930.....	4,224	2,593	159.0	1890.....	2,859	853	42.5	1870.....	1,199	1,033	622.3
1920.....	1,631	767	88.8	1880.....	2,006	89	4.6	1860.....	166	...	...
1910.....	864	434	100.9	1870.....	1,917	-629	-24.7	<b>WARNER ROBINS:</b>			
1900.....	430	...	...	1860.....	2,546	...	...	1960.....	18,633	10,647	133.3
								1950.....	7,986	...	...
<b>LA GRANGE:</b>				<b>NORTH ATLANTA:</b>				<b>WAYCROSS:</b>			
1960.....	23,632	-1,393	-5.6	1960.....	12,661	6,731	113.5	1960.....	20,944	2,045	10.8
1950.....	25,025	3,042	13.8	1950.....	5,930	4,565	334.4	1950.....	18,899	2,136	12.7
1940.....	21,983	1,852	9.2	1940.....	1,365	...	...	1940.....	16,763	1,253	8.1
1930.....	20,131	3,093	18.2	<b>ROME:</b>				1930.....	15,510	-2,558	-14.2
1920.....	17,038	11,451	205.0	1960.....	32,226	2,611	8.8	1920.....	18,068	3,583	24.7
1910.....	5,587	1,313	30.7	1950.....	29,615	3,333	12.7	1910.....	14,485	8,566	144.7
1900.....	4,274	1,184	38.3	1940.....	26,282	4,439	20.3	1900.....	5,919	2,555	76.0
1890.....	3,090	795	34.6	1930.....	21,843	8,591	64.8	1890.....	3,364	...	...
1880.....	2,295	242	11.8	1920.....	13,252	1,153	9.5				
1870.....	2,053	...	...								
1860.....	(1)	...	...								
1850.....	1,523	...	...								

<sup>1</sup> Not returned separately.

Table 6.—AREA AND POPULATION OF COUNTIES, URBAN AND RURAL: 1960 AND 1950

[Minus sign (-) denotes decrease. Percent not shown where less than 0.1]

County	Map reference	Land area in square miles, 1960	1960 population									1950 population			Percent increase, 1950 to 1960		
			Total		Urban			Rural			Total	Urban	Rural	Total	Urban	Rural	
			Number	Per square mile	Total	Percent of total population	Urbanized areas	Other urban territory	Total	Places of 1,000 to 2,500							Other rural territory
The State.....	...	58,274	3,943,116	67.7	2,180,236	55.3	1,372,447	807,789	1,762,880	179,921	1,582,959	3,444,578	1,559,447	1,885,131	14.5	39.8	-6.5
Appling.....	K-10	514	13,246	25.8	4,268	32.2	...	4,268	8,978	...	8,978	14,003	3,409	10,594	-5.4	25.2	-15.3
Atkinson.....	M-9	318	6,188	19.5	...	...	...	6,188	...	2,676	7,362	...	7,362	...	-15.9	...	-15.9
Bacon.....	L-9	293	8,359	28.5	3,515	42.1	...	3,515	4,844	...	4,844	8,940	2,588	6,352	-6.5	35.8	-23.7
Baker.....	M-3	355	4,543	12.8	...	...	...	4,543	...	...	5,952	...	5,952	...	-23.7	...	-23.7
Baldwin.....	G-7	257	34,064	132.5	28,026	82.3	...	28,026	6,038	...	6,038	29,706	23,607	6,097	14.7	18.7	-1.0
Banks.....	C-6	231	6,497	28.1	...	...	...	6,497	...	...	6,935	...	6,935	...	-6.3	...	-6.3
Barrow.....	D-6	171	14,485	84.7	5,555	38.4	...	5,555	8,930	...	8,930	13,115	4,604	8,511	10.4	20.7	4.9
Bartow.....	C-3	463	28,267	61.1	8,668	30.7	...	8,668	19,599	1,026	18,573	27,370	7,270	20,100	3.3	19.2	-2.5
Ben Hill.....	K-7	255	13,633	53.5	8,781	64.4	...	8,781	4,852	...	4,852	14,879	8,130	6,749	-8.4	8.0	-28.1
Berrien.....	M-7	466	12,038	25.8	4,070	33.8	...	4,070	7,968	...	7,968	13,966	3,414	10,552	-13.8	19.2	-24.5
Bibb.....	H-6	251	141,249	562.7	118,542	83.9	114,161	4,381	22,707	...	22,707	114,079	93,499	20,580	23.8	26.8	10.3
Bleckley.....	I-7	219	9,642	44.0	4,714	48.9	...	4,714	4,928	...	4,928	9,218	3,357	5,861	4.6	40.4	-15.9
Brantley.....	M-11	447	5,891	13.2	...	...	...	5,891	...	...	5,891	6,387	...	6,387	...	...	-7.8
Brooks.....	N-6	492	15,292	31.1	5,071	33.2	...	5,071	10,221	...	10,221	18,169	4,769	13,400	-15.8	6.3	-23.7
Bryan.....	J-12	439	6,226	14.2	...	...	...	6,226	...	1,450	4,776	...	5,965	...	4.4	...	4.4
Bulloch.....	T-11	684	24,263	35.5	8,356	34.4	...	8,356	15,907	...	15,907	24,740	6,097	18,643	-1.9	37.1	-14.7
Burke.....	G-11	832	20,596	24.8	5,359	26.0	...	5,359	15,237	...	15,237	23,458	4,461	18,997	-12.2	20.1	-19.8
Butts.....	G-5	185	8,976	48.5	2,545	28.4	...	2,545	6,431	...	6,431	9,079	...	9,079	-1.1	...	-29.2
Calhoun.....	I-3	289	7,341	25.4	...	...	...	7,341	2,384	2,384	4,957	8,578	...	8,578	-14.4	...	-14.4
Candler.....	N-12	656	9,975	15.2	3,272	32.8	...	3,272	6,703	1,536	5,167	7,322	...	7,322	36.2	...	-8.5
Candler.....	I-11	251	6,672	26.6	...	...	...	6,672	2,362	...	4,310	8,063	...	8,063	-17.3	...	-17.3
Carroll.....	F-2	495	36,451	73.6	14,274	39.2	...	14,274	22,177	1,548	20,629	34,112	7,753	26,359	6.9	84.1	-15.9
Catoosa.....	A-2	167	21,101	126.4	6,931	32.8	6,931	...	14,170	1,311	12,859	15,146	2,248	12,898	39.3	208.3	9.9
Chatham <sup>1</sup> .....	N-10	799	5,313	6.6	...	...	...	5,313	1,810	3,503	3,503	4,821	...	4,821	10.2	...	10.2
Chatham <sup>2</sup> .....	J-13	441	188,299	427.0	169,887	90.2	169,887	...	18,412	2,458	15,954	151,481	128,196	23,285	24.3	32.5	-20.9
Chatahoochee.....	J-3	253	13,011	51.4	...	...	...	13,011	...	...	13,011	12,149	...	12,149	7.1	...	7.1
Chattooga.....	B-1	317	19,954	62.9	4,706	23.6	...	4,706	15,248	2,227	13,021	21,197	7,001	14,196	-5.9	-32.8	7.4
Cherokee.....	C-4	414	23,001	55.6	...	...	...	23,001	4,407	18,594	20,750	2,716	18,034	10.8	...	27.5	...
Clarke.....	D-7	125	45,363	362.9	31,355	69.1	...	31,355	14,008	...	14,008	36,550	28,180	8,370	24.1	11.3	67.4
Clay.....	I-2	224	4,551	20.3	...	...	...	4,551	1,320	3,231	5,844	...	5,844	...	-22.1	...	-22.1
Clayton.....	E-4	149	46,365	311.2	30,282	65.3	27,268	3,014	16,083	2,087	13,996	22,872	6,387	16,485	102.7	374.1	-2.4
Clinch.....	N-9	796	6,545	8.2	2,634	40.2	...	2,634	3,911	...	3,911	6,007	...	6,007	9.0	...	-34.9
Cobb.....	D-3	346	114,174	330.0	55,353	48.5	...	55,353	58,821	7,353	51,468	61,838	23,818	38,012	84.7	132.4	54.7
Coffee.....	L-8	613	21,953	35.8	8,736	39.8	...	8,736	13,217	...	13,217	23,961	7,428	16,533	-8.4	17.6	-20.1
Colquitt.....	M-5	563	34,048	60.5	15,764	46.3	...	15,764	18,284	1,037	17,247	33,999	11,639	22,360	0.1	35.4	-18.2
Columbia.....	E-10	290	13,423	46.3	...	...	...	13,423	2,819	10,604	9,525	...	9,525	40.9	...	40.9	
Cook.....	M-7	226	11,822	52.3	4,321	36.6	...	4,321	7,501	1,158	6,343	12,201	2,776	9,425	-3.1	55.7	-20.4
Coweta.....	F-3	443	28,893	65.2	12,169	42.1	...	12,169	16,724	1,215	15,509	27,786	8,218	19,568	4.0	48.1	14.5
Crawford.....	H-5	313	5,816	18.6	...	...	...	5,816	...	...	6,080	...	6,080	...	-4.3	...	-4.3
Crisp.....	K-5	296	17,768	60.0	10,609	59.7	...	10,609	7,159	...	7,159	17,663	9,462	8,201	0.6	12.1	-12.7
Dade <sup>2</sup> .....	A-1	168	8,666	51.6	...	...	...	8,666	1,301	7,365	7,365	...	7,365	17.7	...	17.7	
Dawson.....	C-5	209	3,590	17.2	...	...	...	3,590	...	...	3,712	...	3,712	...	-3.3	...	-3.3
Decatur.....	M-3	586	25,203	43.0	12,714	50.4	12,714	12,714	12,489	...	12,489	23,620	7,562	16,058	6.7	68.1	-22.2
De Kalb.....	E-5	269	256,782	954.6	217,165	84.6	217,165	...	39,617	3,643	35,974	136,395	97,077	39,318	86.3	123.7	0.8
Dodge.....	J-7	499	16,483	33.0	5,118	31.1	...	5,118	11,365	...	11,365	17,665	3,597	14,068	-7.7	42.3	-20.3
Dooly.....	J-5	394	11,474	29.1	...	...	...	11,474	3,403	8,071	14,159	...	14,159	-19.0	...	-19.0	
Dougherty.....	I-4	326	75,680	232.1	58,353	77.1	58,353	...	17,327	...	17,327	43,617	31,155	12,462	73.5	87.3	39.0
Douglas.....	E-3	201	16,741	83.3	4,611	27.5	...	4,611	12,130	...	12,130	3,400	8,737	37.5	35.6	38.3	
Early.....	M-2	526	13,151	25.0	3,580	27.2	...	3,580	9,571	310	9,261	17,413	3,234	14,179	-24.5	10.7	-32.5
Echols.....	O-8	425	1,876	4.4	...	...	...	1,876	...	...	2,494	...	2,494	...	-24.8	...	-24.8
Effingham.....	I-12	480	10,144	21.1	...	...	...	10,144	1,057	9,087	9,133	...	9,133	11.1	...	11.1	
Elbert.....	O-8	359	17,835	49.7	7,107	39.8	...	7,107	10,728	...	10,728	18,585	6,772	11,813	-4.0	4.9	-9.2
Emanuel.....	H-10	686	17,815	26.0	5,943	33.4	...	5,943	11,872	1,095	10,777	19,789	4,300	15,489	-10.0	38.2	-23.4
Evans.....	J-11	186	6,952	37.4	2,672	38.4	...	2,672	4,280	...	4,280	6,653	...	6,653	4.5	...	-35.7
Fannin.....	A-4	396	13,620	34.4	...	...	...	13,620	3,277	10,343	15,192	...	15,192	-10.3	...	-10.3	
Fayette.....	F-4	199	8,199	41.2	...	...	...	8,199	1,389	6,810	7,978	...	7,978	2.8	...	2.8	
Floyd.....	C-2	514	69,130	134.5	37,552	54.3	37,552	37,552	31,578	4,282	27,296	62,899	32,849	30,050	9.9	14.3	5.1
Forsyth.....	O-5	223	12,170	54.6	...	...	...	12,170	1,561	10,609	11,005	...	11,005	10.6	...	10.6	
Franklin.....	B-7	269	13,274	49.3	...	...	...	13,274	4,081	9,193	14,446	...	14,446	-8.1	...	-8.1	
Fulton.....	D-4	523	556,326	1,063.7	521,784	93.8	518,801	2,983	34,542	7,346	27,196	473,572	407,076	66,496	17.5	28.2	-48.1
Gilmer.....	A-4	439	8,922	20.3	...	...	...	8,922	1,320	7,602	9,963	...	9,963	-10.4	...	-10.4	
Glascock.....	G-9	142	2,672	18.8	...	...	...	2,672	...	...	3,579	...	3,579	...	-25.3	...	-25.3
Glynn.....	M-12	423	41,954	99.2	30,319	72.3	30,319	30,319	11,635	...	11,635	29,046	22,114	6,932	44.4	37.1	67.8
Gordon.....	B-3	358	19,228	53.7	3,587	18.7	...	3,587	15,641	...	15,641	16,922	3,231	13,691	1.6	11.0	-0.3
Grady.....	N-4	467	18,015	38.6	7,427	41.2	...	7,427	10,588	...	10,588	16,928	5,577	13,351	-4.8	33	

Table 6.—AREA AND POPULATION OF COUNTIES, URBAN AND RURAL: 1960 AND 1950—Con.

[Minus sign (-) denotes decrease. Percent not shown where less than 0.1]

County	Map reference	Land area in square miles, 1960	1960 population									1950 population			Percent increase, 1950 to 1960					
			Total		Urban			Rural			Total	Urban	Rural	Total	Urban	Rural				
			Number	Per square mile	Total	Percent of total population	Urbanized areas	Other urban territory	Total	Places of 1,000 to 2,500							Other rural territory			
Jefferson.....	F-10	532	17,468	32.8	...	...	...	...	...	...	...	17,468	5,939	11,529	18,855	...	18,855	-7.4	...	-7.4
Jenkins.....	H-11	351	9,148	26.1	3,633	39.7	...	...	3,633	...	...	5,515	...	5,515	10,264	3,449	6,815	-10.9	5.3	-19.1
Johnson.....	H-8	313	8,048	25.7	...	...	...	...	...	...	...	8,048	2,056	5,992	9,893	...	9,893	-18.6	...	-18.6
Jones.....	G-6	402	8,468	21.1	...	...	...	...	...	...	...	8,468	1,320	7,148	7,538	...	7,538	12.3	...	12.3
Lamar.....	G-5	181	10,240	56.6	4,919	48.0	...	...	4,919	...	...	5,321	...	5,321	10,242	4,185	6,057	...	17.5	-12.2
Lanier.....	N-8	167	5,097	30.5	...	...	...	...	...	...	...	5,097	2,236	2,861	5,151	...	5,151	-1.0	...	-1.0
Laurens.....	I-8	811	32,313	39.8	13,814	42.8	...	...	13,814	...	...	18,499	1,677	16,822	33,123	10,232	22,891	-2.4	35.0	-19.2
Lee.....	K-4	355	6,204	17.5	...	...	...	...	...	...	...	6,204	...	6,204	6,674	...	6,674	-7.0	...	-7.0
Liberty.....	K-11	510	14,487	28.4	3,174	21.9	...	...	3,174	...	...	11,313	...	11,313	8,444	...	8,444	71.6	...	34.0
Lincoln.....	D-9	207	5,906	28.5	...	...	...	...	...	...	...	5,906	1,450	4,456	6,462	...	6,462	-8.6	...	-8.6
Long.....	K-11	403	3,874	9.6	...	...	...	...	...	...	...	3,874	1,578	2,296	3,598	...	3,598	...	...	7.7
Lowndes.....	N-7	506	49,270	97.4	30,652	62.2	...	...	30,652	...	...	18,618	1,297	17,321	35,211	20,046	15,165	39.9	52.9	22.8
Lumpkin.....	B-5	291	7,241	24.9	2,604	36.0	...	...	2,604	...	...	4,637	...	4,637	6,574	...	6,574	10.1	...	-29.5
McDuffie.....	E-9	257	12,627	49.1	4,522	35.8	...	...	4,522	...	...	8,105	...	8,105	11,443	3,489	7,954	10.3	29.6	1.9
McIntosh.....	L-12	431	6,364	14.8	...	...	...	...	...	...	...	6,364	1,569	4,795	6,008	...	6,008	5.9	...	5.9
Macon.....	I-5	399	13,170	33.0	3,744	28.4	...	...	3,744	...	...	9,426	2,477	6,949	14,213	2,921	11,292	-7.3	28.2	-16.5
Madison.....	C-7	281	11,246	40.0	...	...	...	...	...	...	...	11,246	...	11,246	12,238	...	12,238	-8.1	...	-8.1
Marion.....	I-3	365	5,477	15.0	...	...	...	...	...	...	...	5,477	...	5,477	6,521	...	6,521	-16.0	...	-16.0
Meriwether.....	G-3	499	19,756	39.6	4,115	20.8	...	...	4,115	...	...	15,641	1,230	14,411	21,055	3,984	17,071	-6.2	3.3	-8.4
Miller.....	M-2	287	6,908	24.1	...	...	...	...	...	...	...	6,908	...	6,908	9,023	...	9,023	-23.4	...	-23.4
Mitchell.....	M-4	511	19,652	38.5	9,362	47.6	...	...	9,362	...	...	10,290	41	10,249	22,528	8,110	14,418	-12.8	15.4	-28.6
Monroe.....	G-5	399	10,495	26.3	3,697	35.2	...	...	3,697	...	...	6,798	...	6,798	10,523	3,125	7,398	-0.3	18.3	-8.1
Montgomery.....	K-9	235	6,284	26.7	...	...	...	...	...	...	...	6,284	1,166	5,118	7,901	...	7,901	-20.5	...	-20.5
Morgan.....	E-6	357	10,280	28.8	2,680	26.1	...	...	2,680	...	...	7,600	...	7,600	11,899	...	11,899	-13.6	...	-36.1
Murray.....	A-3	342	10,447	30.5	...	...	...	...	...	...	...	10,447	1,184	9,263	10,676	...	10,676	-2.1	...	-2.1
Muscogee.....	I-3	220	158,623	721.0	130,752	82.4	130,752	...	...	...	...	27,871	...	27,871	118,028	95,180	22,848	34.4	37.4	22.0
Newton.....	E-6	273	20,999	76.9	8,167	38.9	...	...	8,167	...	...	12,832	3,412	9,420	20,185	8,399	11,786	4.0	-2.8	8.9
Oconee.....	D-7	186	6,304	33.9	...	...	...	...	...	...	...	6,304	...	6,304	7,009	...	7,009	-10.1	...	-10.1
Oglethorpe.....	D-8	432	7,926	18.3	...	...	...	...	...	...	...	7,926	...	7,926	9,958	...	9,958	-20.4	...	-20.4
Paulding.....	D-3	318	13,101	41.2	...	...	...	...	...	...	...	13,101	2,065	11,036	11,752	...	11,752	11.5	...	11.5
Peach.....	I-5	151	13,846	91.7	8,310	60.0	...	...	8,310	...	...	5,536	1,138	4,398	11,705	6,820	4,885	18.3	21.8	13.3
Pickens.....	B-4	225	8,903	39.6	...	...	...	...	...	...	...	8,903	1,036	7,867	8,855	...	8,855	0.5	...	0.5
Pierce.....	M-10	342	9,678	28.3	...	...	...	...	...	...	...	9,678	2,482	7,196	11,112	...	11,112	-12.9	...	-12.9
Pike.....	G-4	230	7,138	31.0	...	...	...	...	...	...	...	7,138	...	7,138	8,459	...	8,459	-15.6	...	-15.6
Polk.....	D-1	312	28,015	89.8	13,278	47.4	...	...	13,278	...	...	14,737	1,023	13,714	30,976	13,291	17,685	-9.6	-0.1	-16.7
Pulaski.....	J-6	254	8,204	32.3	3,967	48.4	...	...	3,967	...	...	4,237	...	4,237	8,808	3,342	5,466	-6.9	18.7	-22.5
Putnam.....	F-7	341	7,798	22.9	3,612	46.3	...	...	3,612	...	...	4,186	...	4,186	7,731	2,749	4,982	0.9	31.4	-16.0
Quitman.....	K-2	170	2,432	14.3	...	...	...	...	...	...	...	2,432	...	2,432	3,015	...	3,015	-19.3	...	-19.3
Rabun.....	A-7	369	7,456	20.2	...	...	...	...	...	...	...	7,456	1,507	5,949	7,424	...	7,424	0.4	...	0.4
Randolph.....	K-3	436	11,078	25.4	4,300	38.8	...	...	4,300	...	...	6,778	1,050	5,728	13,804	4,025	9,779	-19.7	6.8	-30.7
Richmond.....	F-10	325	135,601	417.2	110,870	81.8	110,870	...	...	...	...	24,731	...	24,731	108,876	84,074	24,802	24.5	31.9	-0.3
Rockdale.....	E-5	128	10,572	82.6	2,881	27.3	...	...	2,881	...	...	7,691	1,047	6,644	8,464	...	8,464	24.9	...	-9.1
Schley.....	J-4	162	3,256	20.1	...	...	...	...	...	...	...	3,256	...	3,256	4,036	...	4,036	-19.3	...	-19.3
Screven.....	H-11	651	14,919	22.9	3,469	23.3	...	...	3,469	...	...	11,450	...	11,450	18,000	2,939	15,061	-17.1	18.0	-24.0
Seminole.....	N-2	254	6,802	26.8	2,621	38.5	...	...	2,621	...	...	4,181	...	4,181	7,904	2,569	5,335	-13.9	2.0	-21.6
Spalding.....	F-4	201	35,404	176.1	21,735	61.4	...	...	21,735	...	...	13,669	4,212	9,457	31,045	18,247	12,798	14.0	19.1	6.8
Stephens.....	B-7	180	18,391	102.2	7,303	39.7	...	...	7,303	...	...	11,088	...	11,088	16,647	6,781	9,866	10.5	7.7	12.4
Stewart.....	J-3	463	7,371	15.9	...	...	...	...	...	...	...	7,371	2,820	4,551	9,194	...	9,194	-19.8	...	-19.8
Sumter.....	J-4	485	24,652	50.8	13,472	54.6	...	...	13,472	...	...	11,180	...	11,180	24,208	11,389	12,819	1.8	18.3	-12.8
Talbot.....	H-3	390	7,127	18.3	...	...	...	...	...	...	...	7,127	1,163	5,964	7,687	52	7,635	-7.3	...	-6.7
Taliaferro.....	E-8	195	3,370	17.3	...	...	...	...	...	...	...	3,370	...	3,370	4,515	...	4,515	-25.4	...	-25.4
Tattnall.....	K-10	493	15,837	32.1	2,791	17.6	...	...	2,791	...	...	13,046	1,229	11,817	15,939	...	15,939	-0.6	...	-0.6
Taylor.....	H-4	400	8,311	20.8	...	...	...	...	...	...	...	8,311	2,433	5,878	9,113	...	9,113	-8.8	...	-8.8
Telfair.....	K-8	440	11,715	26.6	2,738	23.4	...	...	2,738	...	...	8,977	2,650	6,327	13,221	...	13,221	-11.4	...	-32.1
Terrell.....	K-4	329	12,742	38.7	5,062	39.7	...	...	5,062	...	...	7,680	...	7,680	14,314	4,411	9,903	-11.0	14.8	-22.4
Thomas.....	N-5	540	34,319	63.6	18,246	53.2	...	...	18,246	...	...	16,073	2,552	13,521	33,932	14,424	19,508	1.1	26.5	-17.6
Tift.....	L-6	266	23,487	88.3	9,903	42.2	...	...	9,903	...	...	13,584	3,644	9,940	22,645	9,601	13,044	3.7	3.1	4.1
Toombs.....	J-10	369	16,837	45.6	10,788	64.1	...	...	10,788	...	...	6,049	...	6,049	17,382	8,618	8,764	-3.1	25.2	-31.0
Towns.....	A-6	166	4,538	27.3	...	...	...	...	...	...	...	4,538	...	4,538	4,803	...	4,803	-5.5	...	-5.5
Treutlen.....	J-9	194	5,874	30.3	...	...	...	...	...	...	...	5,874	2,317	3,557	6,522	...	6,522	-9.9	...	-9.9
Troup.....	G-2	447	47,189	105.6	31,324	66.4	...	...	31,324	...	...	15,865	...	15,865	49,841	32,870	16,971	-5.3	-4.7	-6.5
Turner.....	L-6	2																		

Table 7.—POPULATION OF COUNTIES, BY CENSUS COUNTY DIVISIONS: 1960  
 ["U" denotes an unincorporated place. Total population of a place located in 2 or more census county divisions appears in table 8]

County and census county division	Population	County and census county division	Population	County and census county division	Population	County and census county division	Population
<b>APPLING COUNTY</b> .....	13,246	<b>BIBB COUNTY--Con.</b>		<b>CAMDEN COUNTY</b> .....	9,975	<b>CLARKE COUNTY</b> .....	45,363
Altamaha River div.	1,665	Macon div.	69,764	Kingsland div.	2,485	Athens div.	31,355
Baxley div.	6,753	Macon city <sup>6</sup>	69,764	Kingsland city	1,536	Athens city <sup>17</sup>	31,355
Baxley city	4,268	Rutland div.	5,133	St. Marys div.	3,833	Middle Oconee div.	5,740
Satilla Creek div.	2,879	South Macon div.	23,692	St. Marys city <sup>12</sup>	3,272	Bogart town (pt.)	89
Graham town	130	Swift Creek div.	4,836	Woodbine div.	3,657	Whitehall div.	4,120
Surrency-Thornton div.	1,949	Walnut Creek div.	9,244	Woodbine city <sup>12</sup>	845	Whitehall town	409
Surrency town	312	West Macon div.	11,965			Winterville div.	4,148
		Payne city	346	<b>CANDLER COUNTY</b> .....	6,672	Winterville city <sup>17</sup>	497
<b>ATKINSON COUNTY</b> .....	6,188	<b>BLECKLEY COUNTY</b> .....	9,642	Aline div.	1,122	<b>CLAY COUNTY</b> .....	4,551
Axon div.	1,055	Cochran div.	8,158	Metter div.	4,297	Bluffton div.	1,548
Pearson div.	3,442	Cochran city	4,714	Metter city	2,362	Bluffton town	176
Pearson city	1,615	Salem div.	1,484	Pulaski div.	1,253	Fort Gaines div.	3,003
Willacoocnee div.	1,691			Pulaski town	155	Fort Gaines city	1,320
Willacoocnee town	1,061	<b>BRANTLEY COUNTY</b> .....	5,891	<b>CARROLL COUNTY</b> .....	36,451	<b>CLAYTON COUNTY</b> <sup>18</sup>	46,365
<b>BACON COUNTY</b> .....	8,359	Hoboken div.	1,896	Bowdon div.	6,130	College Park div.	11,433
Alma div.	5,987	Hoboken city	552	Bowdon city <sup>13</sup>	1,548	College Park city (pt.)	8,306
Alma city	3,515	Nahunta div.	2,991	Carrollton div.	10,973	Forest Park div.	18,580
Rockingham div.	2,372	Hickox town	71	Carrollton city <sup>13</sup>	10,973	Forest Park town <sup>18</sup>	14,201
<b>BAKER COUNTY</b> .....	4,543	Nahunta city	952	Carrollton Rural East div.	3,249	Jonesboro div.	6,577
Milford div.	2,053	Waynesville div.	1,004	Carrollton Rural West div.	2,956	Jonesboro city <sup>18</sup>	3,014
Newton div.	2,490	<b>BROOKS COUNTY</b> .....	15,292	Mount Zion-Bowden Junction div.	2,190	Lovejoy town	191
Newton city	529	Barney div.	998	Mount Zion town	211	Morrow div. <sup>18</sup>	6,695
<b>BALDWIN COUNTY</b> .....	34,064	Barney town	165	Roopville div.	1,690	Lake city <sup>18</sup>	1,042
Coopers div.	2,323	Berwick-Pavo div.	2,214	Roopville town	203	Morrow town	580
Meriwether div.	2,150	Barwick town (pt.)	188	Temple div.	2,310	Riverdale div.	3,080
Midway-Hardwick div.	16,909	Pavo city (pt.) <sup>7</sup>	265	Temple town	788	Riverdale city <sup>18</sup>	1,045
Midway-Hardwick (U)	16,909	Dixie div.	1,905	Villa Rica div.	5,289	<b>CLINCH COUNTY</b> .....	6,545
Milledgeville div.	11,117	Dixie town	220	Villa Rica City (pt.) <sup>13</sup>	3,301	Fargo div.	1,251
Milledgeville city <sup>5</sup>	11,117	Empress div.	959	Whitesburg div.	1,664	Homerville div.	5,294
Union Point div.	1,565	Morven div.	2,056	Whitesburg town	366	Argyle town	225
<b>BANKS COUNTY</b> .....	6,497	Morven town	476	<b>CATOOSA COUNTY</b> .....	21,101	Du Pont town	210
Baldwin div.	1,922	Quitman div.	7,160	Boynton Ridge div.	3,841	Homerville city	2,634
Alto town (pt.)	96	Quitman city	5,071	Graysville town	138	<b>COBB COUNTY</b> .....	114,174
Baldwin town (pt.)	195	<b>BRYAN COUNTY</b> .....	6,226	Catoosa Springs div.	2,304	Acworth-Kennesaw div.	11,608
Davis Academy div.	1,035	Fort Stewart div.	...	Fort Oglethorpe-Westside div.	4,937	Acworth city <sup>19</sup>	2,359
Homer div.	2,116	Pembroke div.	4,226	Fort Oglethorpe town (pt.) <sup>14</sup>	2,192	Kennesaw town <sup>19</sup>	1,507
Homer town	612	Pembroke city	1,450	Lakeview div.	5,144	Austell div.	5,992
Maysville div.	1,424	Richmond Hill div.	2,000	Ringgold div.	4,875	Austell city (pt.) <sup>19</sup>	1,867
Gillsville town (pt.)	31	<b>BULLOCH COUNTY</b> .....	24,263	Ringgold city <sup>14</sup>	1,311	Fair Oaks div.	11,547
Lula city (pt.) <sup>3</sup>	61	Brooklet div.	2,937	<b>CHARLTON COUNTY</b> .....	5,313	Fair Oaks (U) (pt.)	6,283
Maysville town (pt.)	344	Brooklet town	557	Folkston div.	4,259	Mableton div.	11,880
<b>BARROW COUNTY</b> .....	14,485	Nevils-Stilson div.	2,556	Homeland town	508	Mableton (U)	7,127
Auburn div.	2,217	Portal div.	2,821	St. George div.	1,054	Marietta div.	41,207
Auburn town	374	Portal town	494	<b>CHATHAM COUNTY</b> <sup>15</sup>	188,299	Elizabeth (U)	1,620
Carl town	204	Register div.	1,676	Garden City div.	8,726	Fair Oaks (U) (pt.)	1,260
Bethlehem div.	1,352	Statesboro div.	8,356	Garden City town <sup>15</sup>	5,451	Marietta city <sup>19</sup>	25,565
Bethlehem town	297	Statesboro city <sup>8</sup>	8,356	Montgomery div.	4,212	Marietta East (U)	4,535
Statham div.	2,376	Statesboro Rural North div.	2,437	Pooler-Burroughs div.	5,597	Northeast Cobb div.	4,899
Statham town	711	Statesboro Rural South div.	3,480	Pooler town <sup>15</sup>	1,073	Powder Springs div.	3,556
Winder div.	8,540	<b>BURKE COUNTY</b> .....	20,596	Port Wentworth div.	5,334	Powder Springs city	746
Russell city	163	Girard div.	1,303	Port Wentworth city <sup>15</sup>	3,705	Smyrna div.	17,382
Winder city	5,555	Girard village	248	Savannah div.	149,245	Fair Oaks (U) (pt.)	426
<b>BARTOW COUNTY</b> .....	28,267	Greens Cut div.	2,000	Savannah city <sup>15</sup>	149,245	Smyrna town <sup>19</sup>	10,157
Adairsville div.	3,274	Keysville div.	1,334	Savannah Beach-Wilmington div.	3,277	Vinings div.	6,103
Adairsville city <sup>4</sup>	1,026	Blythe town (pt.)	2	Savannah Beach town	1,385	<b>COFFEE COUNTY</b> .....	21,953
Cartersville div.	12,397	Midville div.	2,590	Thunderbolt div.	4,105	Ambrose div.	2,390
Cartersville city <sup>4</sup>	8,668	Midville village	676	Thunderbolt town	1,925	Ambrose city <sup>20</sup>	244
Emerson div.	1,938	Sardis div.	2,349	Vernonburg-White Bluff div.	1,130	Broxton div.	2,878
Emerson city	666	Sardis town	829	Vernonburg town <sup>15</sup>	65	Broxton city	907
Buharlee-Taylorville div.	2,089	Vidette div.	1,783	West Savannah div.	6,673	Douglas div.	13,132
Taylorville town (pt.)	199	Vidette village	103	<b>CHATTAHOOCHEE COUNTY</b> .....	13,011	Douglas city <sup>20</sup>	8,736
Kingston div.	1,809	Waynesboro div.	5,359	Cusseta div.	1,442	Nicholls div.	1,897
Kingston city <sup>4</sup>	695	Waynesboro city <sup>9</sup>	5,359	Cusseta town	768	Nicholls city	930
Ladd div.	3,810	Waynesboro East div.	1,956	Fort Benning div.	11,569	West Green div.	1,656
White Pine Log div.	2,950	Waynesboro West div.	1,922	<b>CHATTOOGA COUNTY</b> .....	19,954	<b>COLUMBIA COUNTY</b> .....	34,048
White town	439	<b>BUTTS COUNTY</b> .....	8,976	Little Sand Mountain div.	1,257	Appling div.	2,216
<b>BEN HILL COUNTY</b> .....	13,633	Flovilla div.	1,398	Iyerly div.	2,027	Evans div.	5,606
Fitzgerald div.	8,781	Flovilla city	284	Iyerly town	409	Harlem div.	5,601
Fitzgerald city <sup>5</sup>	8,781	Jackson div.	3,068	Menlo div.	2,221	Harlem city <sup>22</sup>	1,296
Little House Creek div.	2,487	Jackson city <sup>10</sup>	2,545	Menlo town	466	Harlem city <sup>22</sup>	1,423
Sturgeon Creek div.	2,385	Pepperton town	523	Summerville div.	8,522	<b>COLUMBIA COUNTY</b> .....	13,423
<b>BERRIEN COUNTY</b> .....	12,038	Jackson Rural div.	1,867	Summerville city	4,706	Appling div.	2,216
Alapaha div.	1,626	Jenkinsburg div.	889	Trion div.	5,927	Evans div.	5,606
Alapaha town	631	Jenkinsburg town	233	Trion town	2,227	Harlem div.	5,601
Enigma div.	1,956	Towaliga div.	895	<b>CHEROKEE COUNTY</b> .....	23,001	Harlem city <sup>22</sup>	1,296
Enigma town	525	Worthville div.	859	Ball Ground div.	2,720	Harlem city <sup>22</sup>	1,423
Nashville div.	6,726	<b>CALHOUN COUNTY</b> .....	7,341	Ball Ground city <sup>16</sup>	707	<b>COLUMBIA COUNTY</b> .....	13,423
Nashville city	4,070	Arlington div.	1,704	Nelson city (pt.) <sup>16</sup>	117	Appling div.	2,216
Ray City div.	1,730	Arlington city (pt.)	1,152	Canton div.	8,835	Evans div.	5,606
Ray City town	713	Edison div.	2,430	Canton city <sup>16</sup>	2,411	Harlem div.	5,601
<b>BIBB COUNTY</b> .....	141,249	Edison city	1,232	North Canton (U)	1,996	Harlem city <sup>22</sup>	1,296
Bloomfield div.	8,484	Leary div.	1,639	Holly Springs div.	3,656	Harlem city <sup>22</sup>	1,423
Bloomfield Gardens (U)	4,381	Leary city	848	Holly Springs city <sup>16</sup>	475	<b>COLUMBIA COUNTY</b> .....	13,423
Howard div.	5,018	Morgan div.	1,568	Latham town div.	3,015	Appling div.	2,216
Lizella div.	3,113	Morgan city	76	Waleska div.	1,574	Evans div.	5,606
		Dickey town	56	Waleska city <sup>16</sup>	479	Harlem div.	5,601
		Morgan city	293	Woodstock div.	3,201	Harlem city <sup>22</sup>	1,296
				Woodstock city <sup>16</sup>	726	Harlem city <sup>22</sup>	1,423

See footnotes at end of table, p. 19.

Table 7.—POPULATION OF COUNTIES, BY CENSUS COUNTY DIVISIONS: 1960—Con.

["U" denotes an unincorporated place. Total population of a place located in 2 or more census county divisions appears in table 8]

County and census county division	Population	County and census county division	Population	County and census county division	Population	County and census county division	Population
<b>COOK COUNTY</b> .....	<b>11,822</b>	<b>DODGE COUNTY—Con.</b>		<b>FANNIN COUNTY</b> .....	<b>13,620</b>	<b>GLYNN COUNTY</b> .....	<b>41,954</b>
Adel div.....	4,321	Eastman div. <sup>3d</sup> .....	5,118	Blue Ridge div.....	3,423	Brunswick div.....	21,703
Adel city <sup>33</sup> .....	4,321	Eastman city <sup>3d</sup> .....	5,118	Blue Ridge city.....	1,406	Brunswick city <sup>40</sup> .....	21,703
Adel Rural East div.....	1,729	Eastman Rural East div.....	3,033	Higdon-Mobile div.....	1,568	Dock Junction div.....	9,265
Cecil town.....	279	Plainfield town.....	84	McCaysville div.....	4,943	Dock Junction (U).....	5,417
Adel Rural West div.....	1,206	Eastman Rural West div.....	2,469	McCaysville city.....	1,871	Everett div.....	3,899
Lenox div.....	2,071	Rhine div.....	1,941	Mineral Bluff div.....	1,611	St. Simons div.....	5,346
Lenox town.....	802	Rhine town.....	485	Mineral Bluff town.....	149	St. Simons (U).....	3,199
Sparks div.....	2,495			Morganton div.....	2,075	Thalman div.....	1,741
Sparks town.....	1,158			Morganton town.....	211		
		<b>DOOLY COUNTY</b> .....	<b>11,474</b>			<b>GORDON COUNTY</b> .....	<b>19,228</b>
<b>COWETA COUNTY</b> .....	<b>28,893</b>	Byromville div.....	2,506	<b>FAYETTE COUNTY</b> .....	<b>8,199</b>	Calhoun div.....	3,587
East Newman div.....	1,874	Byromville town.....	349	Brooks div.....	1,646	Calhoun city <sup>41</sup> .....	3,587
Grantville div.....	2,132	Lilly town.....	136	Brooks town.....	158	Echota div.....	3,823
Grantville city <sup>44</sup> .....	1,158	Unadilla div.....	4,032	Woolsey town.....	114	Fairmount div.....	2,206
McCullum div.....	1,979	Pinehurst town.....	457	Fayetteville div.....	4,195	Fairmount city.....	619
Palmetto town (pt.).....	57	Vienna div.....	4,936	Fayetteville city <sup>35</sup> .....	1,389	McDaniels div.....	4,653
Moreland div.....	1,690	Vienna city.....	2,099	Tyrone div.....	2,358	Plainville town.....	161
Moreland town.....	329			Tyrone town.....	124	Red Bud div.....	2,081
Newman div.....	12,169	<b>DOUGHERTY COUNTY</b> .....	<b>75,680</b>			Oakman town.....	156
Newman city <sup>34</sup> .....	12,169	Albany div.....	55,890	<b>FLOYD COUNTY</b> .....	<b>69,130</b>	Ranger town.....	161
Sargent div.....	3,894	Albany city <sup>31</sup> .....	55,890	Alto Park div.....	4,261	Sugar Valley-Resaca div.....	2,878
Senoia div.....	3,310	Central Dougherty div.....	8,735	Armichee div.....	3,428	Sugar Valley town.....	165
Haralson town (pt.).....	121	East Dougherty div.....	5,143	Berry Hill div.....	5,909		
Senoia city.....	782	West Dougherty div.....	5,912	Alto Park (U).....	2,526	<b>GRADY COUNTY</b> .....	<b>18,015</b>
Sharpsburg town.....	155			Cave Springs div.....	3,443	Cairo div.....	10,993
Thurin town.....	183	<b>DOUGLAS COUNTY</b> <sup>32</sup> .....	<b>16,741</b>	Cave Springs city.....	1,153	Cairo city <sup>42</sup> .....	7,427
West Newman div.....	1,845	Billarp div.....	1,568	De Soto Park div.....	1,462	Pine Park town.....	82
		Douglasville div.....	4,462	Lindale-Gaither Park div.....	5,535	Calvary-Reno div.....	2,352
<b>CRAWFORD COUNTY</b> .....	<b>5,816</b>	Douglasville city <sup>32</sup> .....	4,462	Lindale-Silver Creek (U).....		Reno town.....	90
Roberta div.....	3,692	Fairplay div.....	1,226	(pt.).....	2,530	Duncanville div.....	666
Roberta city <sup>35</sup> .....	714	Lithia Springs div.....	7,440	Riverside div.....	5,200	Lime Sink div.....	629
Zenith div.....	2,124	Austell city (pt.) <sup>33</sup> .....	7,440	Celanese village (U).....	1,500	Spence div.....	1,328
		Winston div.....	2,045	Rome div.....	32,226	Whigham div.....	2,047
<b>CRISP COUNTY</b> .....	<b>17,768</b>	Villa Rica city (pt.) <sup>32</sup> .....	149	Rome city <sup>36</sup> .....	32,226	Whigham city <sup>42</sup> .....	463
Arabi div.....	1,214			Shannon div.....	3,380		
Arabi town.....	303	<b>EARLY COUNTY</b> .....	<b>13,151</b>	Shannon (U).....	1,629	<b>GREENE COUNTY</b> <sup>43</sup> .....	<b>11,193</b>
Cordale div.....	10,655	Blakely div.....	3,580	Spring Creek div.....	4,286	Greensboro div.....	4,917
Cordale city <sup>26</sup> .....	10,609	Blakely city.....	3,580	Lindale-Silver Creek (U).....		Greensboro city.....	2,773
East Crisp div.....	2,635	Colomokee div.....	2,420	(pt.).....	270	Creshamville div.....	569
West Crisp div.....	3,264	Cuba div.....	2,283	<b>FORSYTH COUNTY</b> .....	<b>12,170</b>	Siloam div.....	1,103
		Damascus div.....	2,745	Big Creek div.....	1,999	Siloam town.....	321
<b>DADE COUNTY</b> .....	<b>8,666</b>	Arlington city (pt.).....	310	Chestatee div.....	1,629	Union Point div.....	2,472
North Dade div.....	4,649	Damascus town.....	297	Cumming div.....	6,292	Union Point town.....	1,615
Trenton town.....	1,301	Jakin div.....	2,123	Cumming town.....	1,561	White Plains div.....	1,247
Sand Mountain div.....	2,284	Jakin town.....	176	Ducktown town.....	49	White Plains city.....	273
Upper Lookout Creek div.....	1,793			Silver City div.....	2,250	Woodville div.....	885
		<b>ECHOLS COUNTY</b> .....	<b>1,876</b>			Penfield town.....	105
<b>DAWSON COUNTY</b> .....	<b>3,590</b>	Echols div.....	1,876	<b>FRANKLIN COUNTY</b> .....	<b>13,274</b>	Woodville town.....	372
Dawsonville div.....	3,590	Howell town.....	141	Carnesville div.....	3,475	<b>GWINNETT COUNTY</b> .....	<b>43,541</b>
Dawsonville town.....	307			Carnesville city <sup>37</sup> .....	481	Buford div.....	7,870
<b>DECATUR COUNTY</b> .....	<b>25,203</b>	<b>EFFINGHAM COUNTY</b> .....	<b>10,144</b>	Lavonia div.....	4,058	Buford city.....	4,168
Attapulgus div.....	4,063	Guyton-Springfield div.....	5,057	Lavonia city.....	2,088	Rest Haven town.....	167
Attapulgus town.....	567	Guyton town.....	670	Royston div.....	3,957	Sugar Hill town.....	1,175
Bainbridge div.....	12,714	Pineora city <sup>33</sup> .....	210	Canon city (pt.).....	583	Decula-Rocky Creek div.....	4,270
Bainbridge city.....	12,714	Springfield city.....	858	Franklin Springs city <sup>37</sup> .....	278	Decula town.....	440
Erinon div.....	3,257	Rincon div.....	3,246	Royston city (pt.).....	1,993	Lawrenceville div.....	9,508
Erinon town.....	246	Rincon town.....	1,057	Sandy Cross div.....	1,784	Lawrenceville city <sup>44</sup> .....	3,804
Climax div.....	2,128	Shawnee div.....	1,831			Lilburn div.....	4,667
Climax town.....	329			<b>FULTON COUNTY</b> .....	<b>556,326</b>	Lilburn city <sup>44</sup> .....	753
Paceville div.....	1,918	<b>ELBERT COUNTY</b> .....	<b>17,835</b>	Alpharetta div.....	7,392	Norcross div.....	7,825
Parkers div.....	1,123	Bowman div.....	2,330	Alpharetta town.....	1,349	Berkeley Lake city <sup>44</sup> .....	94
		Bowman city.....	654	Mountain Park city.....	62	Norcross city.....	1,605
<b>DE KALB COUNTY</b> .....	<b>256,782</b>	Coldwater Creek div.....	2,137	Atlanta div.....	446,123	Snellville-Grayson div.....	5,135
Atlanta div.....	41,332	Ruckersville town.....	64	Atlanta city (pt.) <sup>38</sup> .....	446,123	Grayson town.....	282
Atlanta city (pt.).....	41,332	Dove Creek div.....	1,919	Atlanta city (pt.) <sup>38</sup> .....	446,123	Loganville city (pt.).....	104
Avondale Estates-Belvedere div.....	25,361	Elberton div.....	7,107	Campbellton div.....	4,905	Snellville town.....	468
Avondale Estates city.....	1,646	Elberton city.....	7,107	College Park div.....	15,953	Suwanee-Duluth div.....	4,266
Candler-Glenwood div.....	25,021	Middleton div.....	4,342	College Park city (pt.) <sup>38</sup> .....	15,163	Duluth town.....	1,483
Chamblee-Doraville div.....	31,977	Middleton town.....	106	East Point div.....	35,633	Suwanee town.....	541
Chamblee city <sup>39</sup> .....	6,635	<b>EMANUEL COUNTY</b> <sup>34</sup> .....	<b>17,815</b>	East Point city <sup>38</sup> .....	35,633		
Doraville city <sup>39</sup> .....	4,437	Adrian div.....	1,392	Fairburn-Union div.....	10,666	<b>HABERSHAM COUNTY</b> .....	<b>18,116</b>
Clarkston div.....	4,787	Adrian city (pt.).....	268	Fairburn city.....	2,470	Clarkeville div.....	5,977
Clarkston town.....	1,524	Oak Park town.....	1,039	Union City.....	2,118	Clarkeville city <sup>45</sup> .....	1,352
Constitution-Panthersville div.....	17,783	Summertown div.....	2,114	Hapeville div.....	10,082	Cornelia div.....	2,936
Decatur div.....	22,026	Canochee town.....	30	Hapeville city <sup>38</sup> .....	10,082	Cornelia city <sup>45</sup> .....	2,936
Decatur city.....	22,026	Colemans Lake city <sup>34</sup> .....	34	Palmetto div.....	3,284	Demorest div.....	4,118
Druid Hills-North Decatur div.....	22,559	Swainsboro div.....	9,333	Palmetto town (pt.).....	1,409	Demorest town.....	1,029
Lithonia div.....	10,499	Modoc town.....	33	Roswell div.....	5,832	Mount Airy town.....	417
Lithonia city.....	1,667	Munes town.....	18	Roswell city <sup>38</sup> .....	2,983	Mad Creek div.....	3,401
North Atlanta div.....	12,661	Swainsboro city.....	5,943	Sandy Springs div.....	16,456	Alto town (pt.).....	179
North Atlanta village <sup>29</sup> .....	12,661	Wesley town.....	79			Baldwin town (pt.).....	503
North Druid Hills div.....	17,157			<b>GILMER COUNTY</b> .....	<b>8,922</b>	Turnerville div.....	1,684
Scottdale div.....	9,175	Twin City div.....	3,937	Cartecay div.....	1,442	Tallulah Falls town (pt.).....	171
Stone Mountain div.....	5,510	Garfield town.....	225	Cherry Log div.....	2,261		
Pine Lake town.....	738	Stillmore town.....	354	East Ellijay div.....	2,567	<b>HALL COUNTY</b> .....	<b>49,739</b>
Stone Mountain city.....	1,976	Twin City.....	1,095	East Ellijay town.....	501	Clermont div.....	4,196
Tucker div.....	10,934			Ellijay div.....	2,652	Clermont town <sup>46</sup> .....	268
		<b>EVANS COUNTY</b> .....	<b>6,952</b>	Ellijay city.....	1,320	Flowers Branch div.....	3,324
<b>DODGE COUNTY</b> <sup>30</sup> .....	<b>16,483</b>	Canochee div.....	1,074			Flowers Branch town.....	741
Chauncey div.....	1,953	Claxton div.....	5,878	<b>GLASCOCK COUNTY</b> .....	<b>2,672</b>	Gainesville div.....	16,787
Chauncey town.....	330	Claxton city.....	2,672	Gibson div.....	1,756	Gainesville city <sup>46</sup> .....	16,523
Milan town (pt.).....	367	Daisy town.....	229	Gibson city.....	479	Lula div.....	2,638
Chester div.....	1,969	Hagan city.....	552	Mitchell div.....	916	Gillsville town (pt.).....	109
Chester town.....	377			Edge Hill city <sup>39</sup> .....	55	Lula city (pt.) <sup>46</sup> .....	496
				Mitchell town.....	184	Murrayville div.....	2,951
						North East Gainesville div.....	4,727

See footnotes at end of table, p. 19.

Table 7.—POPULATION OF COUNTIES, BY CENSUS COUNTY DIVISIONS: 1960—Con.

["U" denotes an unincorporated place. Total population of a place located in 2 or more census county divisions appears in table 8]

County and census county division	Population	County and census county division	Population	County and census county division	Population	County and census county division	Population
<b>HALL COUNTY—Con.</b>		<b>JASPER COUNTY</b> ..... 6,135		<b>LINCOLN COUNTY</b> ..... 5,906		<b>MILLER COUNTY</b> ..... 6,908	
Oakwood div.....	3,284	Eudora div.....	573	Lincolnton div.....	3,511	Bellview div.....	1,459
Oakwood town.....	218	Hillsboro div.....	795	Lincolnton town.....	1,450	Colquitt div.....	3,714
South West Gainesville div.....	5,818	Monticello div.....	3,608	South Lincolnton div.....	2,395	Boykin town.....	601
Tadmore div.....	6,014	Monticello city.....	1,931			Colquitt city.....	1,556
Gainesville Cotton Mills (U).....	2,207	Shady Dale div.....	1,159	<b>LONG COUNTY</b> ..... 3,874		Mayhaw div.....	1,735
<b>HANCOCK COUNTY</b> ..... 9,979		Farrar town.....	42	Ludowici div.....	3,874		
Devereux div.....	1,490	Newborn town (pt.) <sup>52</sup> .....	21	Ludowici city <sup>59</sup> .....	1,578	<b>MITCHELL COUNTY</b> ..... 19,652	
Linton div.....	1,297	Shady Dale town.....	201			Baconton div.....	1,413
Mayfield div.....	1,651	<b>JEFF DAVIS COUNTY</b> ..... 8,914		<b>LOWNDES COUNTY</b> ..... 49,270		Baconton city <sup>66</sup> .....	564
Sparta div.....	5,541	Denton div.....	1,726	Clyattville div.....	5,104	Branchville div.....	1,731
Sparta city.....	1,921	Denton city.....	41,726	Remerton town <sup>60</sup> .....	571	Camilla div.....	7,405
<b>HARALSON COUNTY</b> ..... 14,543		Hazlehurst div.....	7,188	Hahira div.....	3,481	Camilla city.....	4,753
Bremen div.....	5,986	Hazlehurst city <sup>53</sup> .....	3,699	Hahira city <sup>60</sup> .....	1,297	Pelham div.....	7,297
Bremen city.....	3,132	<b>JEFFERSON COUNTY</b> <sup>54</sup> ..... 17,468		Lake Park div.....	2,898	Cotton town.....	108
Waco town.....	381	Louisville div.....	6,167	Lake Park town.....	338	Meigs town (pt.).....	41
Buchanan div.....	3,610	Louisville city.....	2,413	Naylor div.....	2,052	Pelham city.....	4,609
Buchanan city.....	753	Stapleton div.....	1,975	Naylor town.....	272	Sale City div.....	1,806
Tallapoosa div.....	4,947	Avera town.....	197	Pine Grove div.....	4,927	Sale City town.....	275
Tallapoosa city.....	2,744	Stapleton town.....	356	Valdosta div.....	30,808		
<b>HARRIS COUNTY</b> ..... 11,167		Wadley div.....	5,006	Valdosta city <sup>60</sup> .....	30,652	<b>MONROE COUNTY</b> ..... 10,495	
Chipley div.....	3,376	Bartow town.....	366			Culloden div.....	1,840
Pine Mountain town <sup>19</sup> .....	790	Wadley town.....	1,898	<b>LUMPKIN COUNTY</b> ..... 7,241		Culloden village.....	260
West Point city (pt.) <sup>47</sup> .....	576	Wrens div.....	4,320	Dahlonega div.....	4,405	Forsyth div.....	7,460
Hamilton div.....	2,157	Matthews town.....	106	Dahlonega city.....	2,604	Forsyth city.....	3,697
Hamilton city.....	396	Wrens town.....	1,628	Three Sisters Mountains div.....	2,836	Juliette div.....	1,195
Shiloh div.....	1,913	<b>JENKINS COUNTY</b> ..... 9,148		<b>McDUFFIE COUNTY</b> ..... 12,627		<b>MONTGOMERY COUNTY</b> ..... 6,284	
Waverly Hall div.....	3,721	North Ogeechee div.....	6,834	Dearing div.....	2,277	Mount Vernon-Ailey div.....	3,066
Waverly Hall town.....	712	Millen city.....	3,633	Dearing town.....	403	Ailey town <sup>67</sup> .....	469
<b>HART COUNTY</b> ..... 15,229		South Ogeechee div.....	2,314	Thomson div.....	4,522	Higgeston town.....	151
Bowersville div.....	2,038	<b>JOHNSON COUNTY</b> ..... 8,048		Thomson city <sup>61</sup> .....	4,522	Mount Vernon city.....	1,166
Bowersville town.....	293	Adrian div.....	1,244	Thomson city <sup>61</sup> .....	4,522	Tarrytown div.....	1,423
Hartwell div.....	4,599	Adrian city (pt.).....	300	Thomson Rural North div.....	3,628	Tarrytown village.....	191
Hartwell city.....	4,599	Scott town.....	149	Thomson Rural South div.....	2,200	Uvalda div.....	1,795
Hartwell Rural North div.....	3,445	Balls Ferry div.....	1,566	<b>McINTOSH COUNTY</b> ..... 6,364		Alston town.....	154
Hartwell Rural South div.....	3,136	Kite div.....	1,497	Darien div.....	4,288	Uvalda town.....	589
Royston div.....	2,011	Kite town.....	424	Darien city.....	1,569	<b>MORGAN COUNTY</b> <sup>68</sup> ..... 10,280	
Canon city (pt.).....	43	Wrightsville div.....	3,741	Townsend div.....	2,076	Bostwick div.....	1,588
Royston city (pt.).....	340	Wrightsville city <sup>55</sup> .....	2,056	<b>MAGON COUNTY</b> ..... 13,170		Apalachee town.....	158
Vanna town.....	152	<b>JONES COUNTY</b> ..... 8,468		Ideal div.....	2,689	Bostwick town.....	272
<b>HEARD COUNTY</b> ..... 5,333		Gray div.....	6,425	Ideal town <sup>62</sup> .....	432	Buckhead div.....	1,309
Centralhatchee div.....	2,321	Gray town.....	1,320	Marshallville div.....	2,281	Buckhead town.....	169
Centralhatchee town.....	174	Griswold div.....	1,084	Marshallville town.....	1,308	Godfrey div.....	1,176
Franklin div.....	1,437	Round Oak div.....	959	Montezuma div.....	5,801	Godfrey village.....	181
Corinth town.....	105	East Juliette town.....	201	Montezuma city <sup>62</sup> .....	3,744	Madison div.....	4,650
Franklin city <sup>48</sup> .....	603	<b>LAMAR COUNTY</b> <sup>56</sup> ..... 10,240		Oglethorpe div.....	2,399	Madison city.....	2,680
Texas div.....	1,575	Barnesville div.....	8,151	Oglethorpe city <sup>62</sup> .....	1,169	Rutledge div.....	1,557
<b>HENRY COUNTY</b> ..... 17,619		Aldora town.....	535	<b>MADISON COUNTY</b> ..... 11,246		Rutledge town.....	478
Hampton div.....	2,597	Barnesville city.....	4,919	Broad River div.....	1,486	<b>MURRAY COUNTY</b> ..... 10,447	
Hampton city <sup>49</sup> .....	1,253	Milner div.....	2,089	Royston city (pt.).....	...	Casey Springs div.....	859
Locust Grove div.....	1,841	Milner town.....	305	Colbert div.....	3,201	Chatsworth div.....	6,161
Locust Grove town.....	369	<b>LANIER COUNTY</b> ..... 5,097		Colbert town.....	425	Chatsworth city <sup>69</sup> .....	1,184
McDonough div.....	8,225	East River div.....	1,242	Hull town.....	119	Spring Place town.....	194
McDonough city <sup>49</sup> .....	2,224	Lakeland div.....	3,855	Comer div.....	2,635	Cisco div.....	1,537
Stockbridge div.....	4,946	Lakeland city.....	2,236	Comer town.....	882	Crandall-Eton town.....	1,890
Stockbridge city.....	1,201	<b>LAURENS COUNTY</b> ..... 32,313		Carlton town.....	321	Crandall town.....	208
<b>HOUSTON COUNTY</b> ..... 39,154		Brewton div.....	2,011	Comer town.....	882	Eton town.....	275
Elko div.....	2,667	Lovett town.....	61	Danielsville div.....	1,886	<b>MUSCOGEE COUNTY</b> ..... 158,623	
Elko town.....	165	Cadwell div.....	1,617	Danielsville city.....	362	Columbus div.....	117,992
Perry div.....	9,588	Cadwell town.....	360	Ila div.....	2,038	Bibb City town.....	1,213
Perry city.....	6,032	Cedar Grove div.....	1,414	Ila city <sup>63</sup> .....	216	Columbus city <sup>70</sup> .....	116,779
Warner Robins div.....	18,633	Dexter div.....	1,474	Pocotalago town.....	71	Columbus South div.....	1,213
Warner Robins city <sup>50</sup> .....	18,633	Dexter town.....	359	<b>MARION COUNTY</b> ..... 5,477		Edgewood div.....	2,769
Warner Robins Rural div.....	8,266	Dublin div.....	13,814	Buena Vista div.....	3,330	Fort Benning div.....	14,223
Centerville town <sup>50</sup> .....	290	Dublin city <sup>57</sup> .....	13,814	Buena Vista city.....	1,574	Gentian div.....	9,391
Elberta town <sup>50</sup> .....	644	Dublin Rural div.....	3,970	North Buena Vista div.....	2,147	Midland div.....	2,305
<b>IRWIN COUNTY</b> ..... 9,211		Dudley div.....	2,175	Tazewell town <sup>64</sup> .....	112	Nankipooch div.....	4,059
Holt div.....	1,558	Allentown town (pt.) <sup>55</sup> .....	...	<b>MERIWETHER COUNTY</b> ..... 19,756		St. Marys div.....	6,671
Oxfield town.....	82	Dudley town.....	360	Gay div.....	2,223	<b>NEWTON COUNTY</b> ..... 20,999	
Irwinville div.....	1,692	Montrose town.....	236	Alvaton town.....	24	Covington div.....	12,141
Ocala div.....	5,961	East Dublin div.....	4,063	Gay town.....	194	Covington city <sup>71</sup> .....	8,167
Mystic town.....	274	East Dublin town <sup>54</sup> .....	1,677	Haralson town (pt.) <sup>65</sup> .....	20	Oxford town.....	1,047
Ocala city.....	3,217	Minter town.....	147	Rocky Mount town.....	83	Mansfield div.....	2,568
<b>JACKSON COUNTY</b> ..... 18,499		Rentz div.....	1,775	Greenville div.....	2,907	Mansfield town.....	394
Commerce div.....	5,692	Rentz town.....	307	Greenville city.....	726	Newborn town (pt.) <sup>71</sup> .....	262
Commerce city <sup>51</sup> .....	3,551	<b>LEE COUNTY</b> ..... 6,204		Ossadales town.....	142	Porterdale div.....	5,097
Jefferson div.....	4,757	Leesburg div.....	2,509	Luthersville div.....	2,479	Porterdale town.....	2,365
Jefferson city.....	1,746	Leesburg city.....	774	Lone Oak town.....	122	Yellow River div.....	1,193
Maysville div.....	1,495	Philema div.....	1,700	Luthersville town.....	282	<b>OCONEE COUNTY</b> ..... 6,304	
Maysville town (pt.).....	209	Smithville div.....	1,995	Primrose town.....	35	Bogart div.....	1,822
Nicholson div.....	1,790	Smithville city (pt.).....	732	St. Marks town.....	28	Bogart town (pt.).....	314
Center town.....	137	<b>LIBERTY COUNTY</b> ..... 14,487		Manchester div.....	6,493	Elder div.....	617
Nicholson town.....	359	Hinesville div.....	10,299	Chalybeate Springs town.....	295	Watkinsville div.....	3,865
South Jackson div.....	1,526	Flemington town.....	149	Manchester city <sup>65</sup> .....	4,115	Bishop town.....	214
Arcade city.....	108	Hinesville town <sup>58</sup> .....	3,174	Raleigh city.....	55	Eastville town.....	107
West Jackson div.....	3,239	Midway div.....	2,141	Warm Springs div.....	3,090	Farmington city.....	151
Braselton town.....	255	Midway city <sup>58</sup> .....	240	Durand town.....	195	North High Shoals town.....	122
Hoschton town.....	370	Riceboro div.....	2,047	Warm Springs city.....	538	Watkinsville town.....	758
Pendergrass town.....	215	Riceboro city.....	259	White Sulphur Springs town.....	156		
Talmo town.....	162			Woodbury div.....	2,564		
				Woodbury town.....	1,230		

The revised population total for Denton is 255. The figure in the table includes population for an area misclassified as inside, rather than outside, the city limits. This error was discovered too late for correction in the detailed distributions. See other footnotes at end of table, p. 19.



Table 7.—POPULATION OF COUNTIES, BY CENSUS COUNTY DIVISIONS: 1960—Con.  
 ["U" denotes an unincorporated place. Total population of a place located in 2 or more census county divisions appears in table 8]

County and census county division	Population	County and census county division	Population	County and census county division	Population	County and census county division	Population
<b>OGLETHORPE COUNTY</b> .....	<b>7,926</b>	<b>RANDOLPH COUNTY</b> .....	<b>11,078</b>	<b>SUMTER COUNTY--Con.</b>		<b>TIFT COUNTY--Con.</b>	
Lexington-Crawford div.....	4,723	Benevolence-Springvale div.....	1,819	Leslie-De Soto div.....	2,714	Tifton div.....	9,903
Crawford city.....	541	Benevolence town.....	123	Cobb town <sup>81</sup> .....	90	Tifton city <sup>87</sup> .....	9,903
Lexington town.....	376	Springvale town.....	57	Da Soto village.....	282	Ty Ty div.....	1,678
Smithonia town.....	30	Carnegie-Coleman div.....	1,886	Leslie village.....	494	Ty Ty town.....	461
Maxeys div.....	1,402	Carnegie town.....	113	Plains div.....	3,032		
Maxeys town.....	149	Coleman town.....	220	Plains town.....	572		
Vesta-Enterprise div.....	1,801	Cuthbert div.....	4,300			<b>TOOMBS COUNTY</b> .....	<b>16,837</b>
		Cuthbert city.....	4,300	<b>TALBOT COUNTY</b> .....	<b>7,127</b>	Lyons div.....	5,593
<b>PAULDING COUNTY</b> .....	<b>13,101</b>	Shellman div.....	3,073	Junction City div.....	1,971	Lyons city.....	3,219
Dallas div.....	5,808	Shellman city.....	1,050	Geneva town.....	226	Choopee village.....	51
Dallas city <sup>72</sup> .....	2,065			Junction City town.....	226	Santa Claus city <sup>88</sup> .....	5
Hiram div.....	3,251	<b>RICHMOND COUNTY</b> .....	<b>135,601</b>	Talbotton div.....	2,641	Toombs Central div.....	2,281
Hiram city <sup>72</sup> .....	358	Augusta div.....	70,626	Talbotton city <sup>82</sup> .....	1,163	Vidalia div.....	8,963
Huntsville div.....	1,499	Augusta city <sup>77</sup> .....	70,626	Woodland div.....	2,515	Charles city.....	50
Braswell town.....	14	Camp Gordon div.....	10,272	Woodland town.....	720	Normantown town.....	49
Yorkville div.....	2,543	Forest Hills div.....	6,460			Vidalia city.....	7,569
		Gracewood div.....	1,913	<b>TALIAFERRO COUNTY</b> .....	<b>3,370</b>		
<b>PEACH COUNTY</b> .....	<b>13,846</b>	Hephzibah div.....	3,540	Crawfordville div.....	2,309	<b>TOWNS COUNTY</b> .....	<b>4,538</b>
Byron div.....	2,512	Blythe town (pt.).....	170	Crawfordville city.....	786	Hiwassee div.....	1,688
Byron town.....	1,136	Lakemont div.....	5,837	Sharon div.....	1,061	Hiwassee town.....	455
Fort Valley div.....	11,334	Neco div.....	20,392	Sharon city.....	264	Macedonia div.....	1,072
Fort Valley city.....	8,510	South Nellsville div.....	4,006			Young Harris div.....	1,778
		Turpin Place div.....	7,189	<b>TAPPAHULL COUNTY</b> .....	<b>15,837</b>	Young Harris town.....	743
		Tuxedo Park div.....	5,366	Collins div.....	3,105		
<b>PICKENS COUNTY</b> .....	<b>8,903</b>			Cobbtown city.....	280	<b>TREUTLEN COUNTY</b> .....	<b>5,874</b>
Jasper div.....	2,880	<b>ROCKDALE COUNTY</b> .....	<b>10,572</b>	Collins city.....	565	Gillis Springs div.....	1,003
Jasper city <sup>74</sup> .....	1,036	Middle Rockdale div.....	6,797	Glennville div.....	6,496	Soperton div.....	4,871
Ludville div.....	1,258	Conyers city.....	2,881	Glennville city.....	2,791	Soperton city.....	2,317
Talking Rock div.....	1,356	Milstead (U).....	1,047	Reidsville div.....	6,236		
Talking Rock town.....	84	North Rockdale div.....	1,738	Manassas city.....	154	<b>TROUP COUNTY</b> .....	<b>47,189</b>
Tate div.....	3,409	South Rockdale div.....	2,037	Reidsville city.....	1,229	Abbotsford div.....	703
Nelson city (pt.) <sup>74</sup> .....	541					Hillcrest div.....	2,115
		<b>SCHLEY COUNTY</b> .....	<b>3,256</b>	<b>TAYLOR COUNTY</b> .....	<b>8,311</b>	Hogansville div.....	5,911
<b>PIERCE COUNTY</b> .....	<b>9,678</b>	Ellaville div.....	3,256	Butler div.....	3,162	Hogansville city.....	3,658
Blackshear div.....	5,876	Ellaville city.....	905	Butler town.....	1,346	La Grange div.....	23,632
Blackshear city.....	2,482			Carsonville-Panhandle div.....	1,743	La Grange city.....	23,632
Bristol div.....	1,502	<b>SCREVEN COUNTY</b> .....	<b>14,919</b>	Carsonville city <sup>83</sup> .....	52	Mountainville town.....	139
Bristol town.....	162	Hilonton div.....	1,378	Reynolds div.....	2,504	Oak Grove div.....	1,266
Patterson div.....	2,300	Hilonton town.....	353	Reynolds town.....	1,087	Pleasant Grove div.....	2,567
Patterson town.....	719	Millhaven div.....	1,479	Rupert div.....	902		
		Newington div.....	2,628	<b>TELEFAIR COUNTY</b> .....	<b>11,715</b>	Tatum div.....	2,865
<b>PIKE COUNTY</b> .....	<b>7,138</b>	Newington town.....	399	Jacksonville div.....	1,258	West Point div.....	6,054
Concord-Molena div.....	1,990	Oliver city.....	192	Jacksonville town <sup>84</sup> .....	236	West Point city (pt.) <sup>85</sup> .....	4,034
Concord town.....	333	Rocky Ford div.....	2,074	Lumber City div.....	1,936		
Molena city.....	279	Rocky Ford town.....	241	Lumber City (pt.) <sup>82</sup> .....	1,360	<b>TURNER COUNTY</b> .....	<b>8,439</b>
Meansville div.....	1,619	Sylvania div.....	7,360	McRae-Helena div.....	4,028	Ashburn div.....	3,291
Meansville town.....	335	Sylvania city.....	3,469	Helena town.....	1,293	Ashburn city.....	3,291
Williamson div.....	1,156			McRae city <sup>84</sup> .....	2,738	Rebecca div.....	1,139
Williamson town.....	215	<b>SEMINOLE COUNTY</b> .....	<b>6,802</b>	McRae-Helena Rural div.....	2,135	Rebecca town.....	278
Zebulon div.....	2,373	Donalsonville div.....	2,621	Scotland town (pt.).....	214	Sycamore div.....	2,514
Zebulon city.....	563	Donalsonville city.....	2,621	Towns town.....	91	Sycamore city.....	501
		Iron City div.....	1,880	Milan div.....	2,298	Worth div.....	1,495
		Iron City town.....	298	Milan town (pt.).....	419		
<b>POLK COUNTY</b> .....	<b>28,015</b>	Steam Mill div.....	2,301			<b>TWIGGS COUNTY</b> .....	<b>7,935</b>
Aragon div.....	3,385			<b>TERRELL COUNTY</b> <sup>85</sup> .....	<b>12,742</b>	Danville div.....	2,220
Aragon (U).....	1,023	<b>SPALDING COUNTY</b> .....	<b>35,404</b>	Bronwood div.....	1,407	Allentown town (pt.) <sup>86</sup> .....	195
Taylorville town (pt.).....	27	Experiment div.....	2,497	Bronwood town.....	400	Danville town (pt.).....	2,433
Gedartown div.....	9,340	Experiment (U).....	2,497	Dawson div.....	8,062	Dry Branch div.....	2,433
Gedartown city.....	9,340	Griffin div.....	21,735	Dawson city.....	5,062	Jeffersonville div.....	3,282
Gedartown Rural North div.....	3,576	Griffin city <sup>78</sup> .....	21,735	Parrott div.....	1,627	Jeffersonville city.....	1,013
Gedartown Rural South div.....	4,005	Orchard Hill-Ringgold div.....	4,260	Parrott town.....	280		
Rockmart div.....	7,709	East Griffin (U).....	1,715	Sasser div.....	1,646	<b>UNION COUNTY</b> .....	<b>6,510</b>
Rockmart city <sup>75</sup> .....	3,938	Orchard Hill town.....	105	Sasser town.....	382	Blairsville North div.....	3,374
		Rover-Zetella div.....	2,391			Blairsville town.....	437
<b>PULASKI COUNTY</b> .....	<b>8,204</b>	Sunnyside-Birdie div.....	4,521	<b>THOMAS COUNTY</b> .....	<b>34,319</b>	Blairsville South div.....	2,452
Finleyson div.....	1,748	Sunnyside village.....	190	Boston div.....	2,947	Suches div.....	684
Finleyson town.....	82			Boston city.....	1,357		
Hartford div.....	1,217	<b>STEPHENS COUNTY</b> .....	<b>18,391</b>	Coolidge div.....	2,140	<b>UPSON COUNTY</b> .....	<b>23,800</b>
Hawkinsville div.....	5,239	Broad River div.....	5,408	Coolidge city <sup>84</sup> .....	679	Atwater div.....	3,052
Hawkinsville city.....	3,967	Avalon town.....	194	Merrillville town.....	111	East Thomaston div.....	2,237
		Martin town.....	209	Meigs div.....	1,914	East Thomaston village.....	2,237
<b>PUTNAM COUNTY</b> .....	<b>7,798</b>	Rock Creek div.....	3,545	Meigs town (pt.).....	1,195	Gordon div.....	3,479
Eatonton div.....	3,612	Toocoo div.....	7,303	Metcalf div.....	2,306	Lincoln Park (U).....	1,840
Eatonton city.....	3,612	Toocoo city.....	7,303	Metcalf town.....	241	The Rock town.....	3,841
Glades div.....	1,334	Toocoo Creek div.....	2,135	Ochlocknee div.....	1,984	The Rock-Yatesville div.....	115
Little River div.....	1,393			Ochlocknee town.....	502	Yatesville town.....	354
Phoenix div.....	1,459	<b>STEWART COUNTY</b> .....	<b>7,371</b>	Pavo-Barwick div.....	2,518	Thomas div.....	9,336
		Lumpkin div.....	2,997	Barwick town (pt.).....	212	Thomaston city <sup>91</sup> .....	9,336
<b>QUITMAN COUNTY</b> .....	<b>2,432</b>	Lumpkin city <sup>86</sup> .....	1,348	Pavo city (pt.) <sup>86</sup> .....	552	Thurston div.....	1,855
Georgetown div.....	2,432	Omaha div.....	1,575	Thomasville div.....	18,246		
Georgetown town <sup>76</sup> .....	554	Omaha town.....	174	Thomasville city <sup>88</sup> .....	18,246	<b>WALKER COUNTY</b> <sup>92</sup> .....	<b>45,264</b>
		Richland div.....	2,799	Thomasville Rural North div.....	2,264	Beverly Hills div.....	6,874
<b>RABUN COUNTY</b> .....	<b>7,456</b>	Richland city.....	1,472			Fort Oglethorpe town (pt.).....	59
Clayton div.....	3,752	<b>SUMTER COUNTY</b> .....	<b>24,652</b>	<b>TIFT COUNTY</b> .....	<b>23,487</b>	Chattanooga Valley div.....	7,093
Clayton city.....	1,507	Americus div.....	13,735	Brookfield div.....	1,632	Chickamauga div.....	7,460
Tiger div.....	1,722	Americus city.....	13,472	Chula div.....	1,601	Chickamauga city.....	1,824
Tallulah Falls town (pt.).....	54	Americus Rural div.....	3,441	North Tifton div.....	1,170	Fairlyland div.....	2,479
Tiger town.....	277	Smithville city (pt.).....	...	Oak Ridge div.....	1,870	Kensington div.....	1,764
Valley div.....	1,982	Andersonville div.....	1,730	Phillipsburg (U) (pt.).....	15	La Fayette-Linwood div.....	6,348
Dillard town.....	204	Andersonville village.....	263	Unionville (U) (pt.).....	51	La Fayette city.....	5,588
Mountain City town.....	550			Omega div.....	1,832	Linwood town.....	760
				Omega city <sup>87</sup> .....	940	La Fayette Rural North div.....	2,238
				Phillipsburg-Unionville div.....	3,801	La Fayette Rural South div.....	3,006
				Phillipsburg (U) (pt.).....	2,022	Rock Spring div.....	2,341
				Unionville (U) (pt.).....	1,556	Rossville div.....	4,665
						Rossville city <sup>88</sup> .....	4,665
						Villanow div.....	996

See footnotes at end of table, p. 19.



Table 7.—POPULATION OF COUNTIES, BY CENSUS COUNTY DIVISIONS: 1960—Con.  
 ["U" denotes an unincorporated place. Total population of a place located in 2 or more census county divisions appears in table 8]

County and census county division	Population	County and census county division	Population	County and census county division	Population	County and census county division	Population
WALTON COUNTY.....	20,481	WARREN COUNTY--Con.		WHEELER COUNTY.....	5,342	WILKES COUNTY.....	10,961
Campton div.....	1,920	Panhandle div.....	596	Alamo div.....	2,676	Rayle div.....	1,914
Campton town.....	200	Warrenton div.....	2,807	Alamo city <sup>98</sup> .....	822	Tignall div.....	2,239
Gratis town.....	64	Warrenton city <sup>98</sup> .....	1,770	Scotland town (pt.).....	22	Danburg town.....	108
Good Hope div.....	2,261	WASHINGTON COUNTY.....	18,903	Glenwood div.....	2,666	Tignall town.....	556
Good Hope town.....	165	Davisboro div.....	3,064	Glenwood city <sup>98</sup> .....	682	Washington-Metasville div.....	6,808
Jersey div.....	1,839	Davisboro city.....	417	Lumber City (pt.) <sup>98</sup> .....	...	Metasville town.....	73
Jersey town.....	170	Riddleville town.....	111	WHITE COUNTY.....	6,935	Washington city.....	4,440
Walnut Grove town.....	119	Deepstep div.....	1,302	Cleveland div.....	3,733	WILKINSON COUNTY.....	9,250
Loganville div.....	2,706	Deepstep town.....	139	Cleveland city.....	657	Allentown div.....	1,676
Between town.....	80	Harrison div.....	1,567	Helen div.....	1,196	Allentown town (pt.) <sup>100</sup> .....	255
Loganville city (pt.).....	822	Harrison town.....	209	Helen town.....	227	Danville town (pt.).....	264
Monroe div.....	8,618	Sandersville div.....	5,425	Mossy Creek div.....	2,006	Gordon div.....	2,960
Monroe city <sup>93</sup> .....	6,826	Sandersville city <sup>96</sup> .....	5,425	WHITFIELD COUNTY.....	42,109	Gordon town.....	1,793
Social Circle div.....	3,137	Sandersville Rural div.....	1,706	Dalton div.....	17,868	Ivey town.....	48
Social Circle city.....	1,780	Tennille div.....	4,433	Dalton city <sup>99</sup> .....	17,868	Irwin div.....	3,186
WARE COUNTY.....	34,219	Tennille city <sup>96</sup> .....	1,837	North Central div.....	7,667	Irwin town.....	673
Dixie Union div.....	1,487	Warthen div.....	1,406	North Whitfield div.....	2,913	McIntyre town.....	316
Beach town.....	53	WAYNE COUNTY.....	17,921	Valley Point div.....	9,958	Toombs div.....	1,428
Manor div.....	1,089	Jesup div.....	12,618	Westside div.....	3,703	Toombs town.....	764
North Waycross div.....	4,050	Jesup city <sup>97</sup> .....	7,304	WILCOX COUNTY.....	7,905	BRIDGEBORO COUNTY.....	16,682
Hebardville (U).....	2,758	Odum div.....	2,593	Abbeville div.....	2,003	Bridgeboro div.....	1,952
South Waycross div.....	3,689	Odum town.....	404	Abbeville city.....	872	Poulan div.....	2,929
Wareboro div.....	2,960	Screven div.....	2,710	Pineview town.....	1,288	Poulan city.....	736
Waycross div.....	20,944	Screven town.....	1,010	Pineview div.....	369	Summer div.....	1,504
Waycross city <sup>94</sup> .....	20,944	WEBSTER COUNTY.....	3,247	Pitts div.....	1,798	Summer town.....	193
WARREN COUNTY.....	7,360	Preston div.....	1,584	Pitts town.....	388	Sylvester div.....	7,042
Camak div.....	1,162	Preston town.....	232	Seville town.....	179	Sylvester city <sup>101</sup> .....	3,610
Camak town.....	285	Weston div.....	1,663	Rochelle div.....	2,816	Warwick div.....	3,255
Norris div.....	1,301	Weston town.....	120	Rochelle city.....	1,235	Oakfield town.....	141
Norwood div.....	1,494					Warwick town.....	434
Norwood city.....	294						

1 BACON.--Annexation to Alma city.  
 2 BALDWIN.--Annexation to and detachment from Milledgeville city.  
 3 BANKS.--Bellton and Lula towns consolidated and designated as Lula city.  
 4 BARTOW.--Adairsville and Kingston towns changed to cities since 1950. Annexations to Cartersville city.  
 5 BEN HILL.--Annexations to Fitzgerald city.  
 6 BIBB.--Annexations to Macon city.  
 7 BROOKS.--Pavo town changed to city since 1950.  
 8 BULLOCH.--Annexations to Statesboro city.  
 9 BURKE.--Annexations to Waynesboro city.  
 10 BUTTS.--Annexations to Jackson city.  
 11 CALHOUN.--Leary town changed to city since 1950.  
 12 CAMDEN.--Woodbine town changed to city since 1950. Annexations to St. Marys city.  
 13 CARROLL.--Villa Rica city returned in 1950 as a town. Villa Rica city annexed Fullersville town and other area. Bowdon town changed to city since 1950. Annexations to Bowdon city and Carrollton city.  
 14 CATOUGA.--Annexation to Fort Oglethorpe town. Ringgold town changed to city since 1950.  
 15 CHATHAM.--Barnwell Island, Beaufort County, S.C., ceded to Chatham County, Ga., by Federal action in 1958. Annexations to Garden City and Pooler towns. Port Wentworth city incorporated since 1950. Annexations to and detachments from Savannah city. Vernonburg town not returned separately in 1950.  
 16 CHEROKEE.--Ball Ground, Nelson, Waleska, Canton, Holly Springs, and Woodstock towns changed to cities since 1950.  
 17 CLARKE.--Annexations to Athens city and Winterville city. Winterville town changed to city since 1950.  
 18 CLAYTON.--Lake Tara town discontinued since 1950. Annexations to College Park, Riverdale, and Jonesboro cities and Forest Park town. Lake city incorporated since 1950. Riverdale town changed to city since 1950.  
 19 COBB.--Annexations to Marietta, Acworth, and Austell cities and Smyrna and Kenneway towns.  
 20 COFFEE.--Ambrose city incorporated since 1950. Annexations to Douglas city.  
 21 COLQUITT.--Annexations to Moultrie city.  
 22 COLUMBIA.--Harlem town changed to city since 1950. Grovetown city not returned separately in 1950.  
 23 COOK.--Annexations to Adel city.  
 24 COWETA.--Annexations to Newman city. Grantville town changed to city since 1950.  
 25 CRAWFORD.--Annexation to Roberts city.  
 26 CRISP.--Annexations to Cordele city.  
 27 DADE.--Boundary between Dade and Walker Counties adjusted since 1950.  
 28 DECATUR.--Annexations to Bainbridge city.  
 29 DE KALB.--North Atlanta town changed to village since 1950. Annexations to Doraville and Chamblee cities.  
 30 DODGE.--Empire town discontinued since 1950. Annexations to Eastman city.  
 31 DOUGHERTY.--Annexations to Albany city.  
 32 DOUGLAS.--Winston town discontinued since 1950. Douglasville town changed to city since 1950. Villa Rica city returned in 1950 as a town. Annexation to Villa Rica and Austell cities.  
 33 EFFINGHAM.--Pineola city incorporated since 1950.  
 34 EMANUEL.--Summertown town discontinued prior to 1950; information received too late to exclude from tabulation. Coleman Lake city incorporated since 1950.  
 35 FAYETTE.--Annexation to Fayetteville city.  
 36 FLOYD.--Annexations to and detachments from Rome city.  
 37 FRANKLIN.--Annexations to Carnesville city and Franklin Springs city.  
 38 FULTON.--Roswell town changed to city since 1950. Annexations to Roswell, College Park, East Point, and Hapeville cities. Annexations to and detachments from Atlanta city. Part of East Point city detached and area annexed to College Park city.  
 39 GLASCOCK.--Edge Hill city not returned separately in 1950.  
 40 GLYNN.--Annexation to Brunswick city.  
 41 GORDON.--Annexations to Calhoun city.  
 42 GRADY.--Whigham town changed to city since 1950. Annexations to Cairo city.  
 43 GREENE.--Part of Greene County annexed to Morgan County.  
 44 GWINNET.--Annexations to Lawrenceville city. Berkeley Lake and Lilburn cities incorporated since 1950.  
 45 HABERSHAM.--Clarksville city returned as Clarksville in 1950. Annexations to Cornelia city.  
 46 HALL.--Annexations to Clermont town and Gainesville city. Lula and Bellton towns consolidated and designated as Lula city.

47 HARRIS.--ChIPLEY town changed to Pine Mountain town since 1950. Annexations to West Point city.  
 48 HEARD.--Annexations to Franklin city.  
 49 HENRY.--Annexations to McDonough town and Hampton city.  
 50 HOUSTON.--Centerville and Elberta towns incorporated since 1950. Warner Robins town changed to city since 1950. Annexations to and detachment from Warner Robins city.  
 51 JACKSON.--Annexation to Commerce city.  
 52 JASPER.--Newborn town returned in Newton County only in 1950.  
 53 JEFF DAVIS.--Annexations to and detachments from Hazlehurst city.  
 54 JEFFERSON.--Stellaville town discontinued since 1950.  
 55 JOHNSON.--Annexation to Wrightsville city.  
 56 LAMAR.--Piedmont town discontinued prior to 1950; information received too late to exclude from tabulation.  
 57 LAURENS.--Annexations to Dublin city. Allentown town not returned separately in 1950. East Dublin town incorporated since 1950.  
 58 LIBERTY.--Midway town changed to city since 1950. Annexations to and detachments from Hinesville town.  
 59 LONG.--Annexations to Ludowici city.  
 60 LOWMEDES.--Annexations to Hahira and Valdosta cities. Hahira town changed to city since 1950. Remerton town incorporated since 1950.  
 61 McDUFFIE.--Annexations to Thomson city.  
 62 MACON.--Annexations to Ideal town and Montezuma city. Detachment from Oglethorpe city.  
 63 MADISON.--Ila town changed to city since 1950.  
 64 MARION.--Tazewell town incorporated since 1950.  
 65 MERIWETHER.--Haralson town returned in Coweta County only in 1950. Annexation to and detachment from Manchester city.  
 66 MITCHELL.--Baconton town changed to city since 1950.  
 67 MONTGOMERY.--Annexation to Ailey town.  
 68 MORGAN.--Part of Green County annexed to Morgan County.  
 69 MURRAY.--Annexations to Chatsworth city.  
 70 MUSCOGEE.--Annexations to Columbus city.  
 71 NEWTON.--Newborn town returned in Newton County only in 1950. Annexations to Covington city.  
 72 PAULDING.--Dallas and Hiram towns changed to cities since 1950.  
 73 PEACH.--Annexation to Byron town.  
 74 PICKENS.--Nelson and Jasper towns changed to cities since 1950.  
 75 POLK.--Annexations to Rockmart and Cedartown cities.  
 76 QUITMAN.--Georgetown town returned in 1950 as a village.  
 77 RICHMOND.--Annexations to Augusta city.  
 78 SPALDING.--Annexations to Griffin city.  
 79 STEPHENS.--Annexations to Toccoa city.  
 80 STEWART.--Annexation to Lumpkin city.  
 81 SUMNER.--Cobb town not returned separately in 1950. Annexations to Americus city.  
 82 TALBOT.--Talbot town changed to city since 1950. That part of Manchester city in Talbot County detached; city is now in Meriwether County only.  
 83 TALLADOGA.--Carsonville city incorporated since 1950.  
 84 Telfair.--Annexation to McRae city. Lumber City town changed to city since 1950. Jacksonville town not returned separately in 1950.  
 85 TERRELL.--Herod town discontinued.  
 86 THOMAS.--Pavo and Coolidge towns changed to cities since 1950. Annexations to Thomasville city.  
 87 TIFT.--Annexations to Tifton city. Omega town changed to city since 1950.  
 88 TOMBS.--Santa Claus city not returned separately in 1950.  
 89 TROUP.--Annexations to West Point city.  
 90 TROTT.--Allentown town not returned separately in 1950.  
 91 UPSON.--Thomaston city annexed Silverton city and other area.  
 92 WALKER.--Annexations to Rossville city. Boundary between Dade and Walker Counties adjusted since 1950.  
 93 WALTON.--Annexations to Monroe city.  
 94 WARE.--Annexations to Waycross city.  
 95 WARREN.--Annexations to and detachments from Warrenton city.  
 96 WASHINGTON.--Annexations to Tennille and Sandersville cities.  
 97 WAYNE.--Annexations to Jesup city.  
 98 WHEELER.--Glenwood town changed to city since 1950. Lumber City returned in Telfair County only in 1950. Alamo town changed to city since 1950.  
 99 WHITFIELD.--Annexations to Dalton city.  
 100 WILKINSON.--Allentown town not returned separately in 1950.  
 101 WORTH.--Annexations to Sylvester city.

Table 8.—POPULATION OF ALL INCORPORATED PLACES AND OF UNINCORPORATED PLACES OF 1,000 OR MORE: 1940 TO 1960

["U" denotes an unincorporated place. Asterisk (\*) denotes an incorporated place under 2,500 located in an urbanized area]

Place	County	1960	1950	1940	Place	County	1960	1950	1940
Abbeville.....	Wilcox.....	872	890	1,010	Cadwell.....	Laurens.....	360	310	291
Acworth.....	Cobb.....	2,359	1,466	1,267	Cairo.....	Grady.....	7,427	5,577	4,653
Adairsville.....	Bartow.....	1,026	916	827	Calhoun.....	Gordon.....	3,587	3,231	2,955
Adel.....	Cook.....	4,321	2,776	2,134	Camak.....	Warren.....	285	379	360
Adrian.....	Emanuel.....	568	503	580	Camilla.....	Mitchell.....	4,753	3,745	2,588
	Johnson.....				Campton.....	Walton.....	200	163	190
Alley.....	Montgomery.....	469	508	506	Canon.....	Franklin.....	626	596	496
Alano.....	Wheeler.....	822	800	646	Canoochee.....	Hart.....	30	62	53
Alapaha.....	Berrien.....	631	505	494	Canton.....	Cherokee.....	2,411	2,716	2,651
Albany.....	Dougherty.....	55,890	31,155	19,055	Carl.....	Barrow.....	204	214	135
Aldora.....	Lamar.....	535	591	746	Carlton.....	Madison.....	321	249	284
	Laurens.....				Carnegie.....	Randolph.....	113	197	262
Allentown.....	Twiggs.....	450	...	...	Carnesville.....	Franklin.....	481	349	361
	Wilkinson.....				Carrollton.....	Carroll.....	10,973	7,753	6,214
Alma.....	Bacon.....	3,515	2,588	1,840	Carsonville.....	Taylor.....	52	...	...
Alpharetta.....	Fulton.....	1,349	917	647	Cartersville.....	Bartow.....	8,668	7,270	6,141
Alston.....	Montgomery.....	154	147	213	Cave Springs.....	Floyd.....	1,153	959	982
Alto.....	Banks.....	275	302	217	Cecil.....	Cook.....	279	254	216
	Habersham.....				Cedar town.....	Polk.....	9,340	9,470	9,025
Alto Park (U).....	Floyd.....	2,526	1,195	...	Celanese (U).....	Floyd.....	1,500	1,945	...
Alvton.....	Meriwether.....	24	95	109	Center.....	Jackson.....	137	112	109
Ambrose.....	Coffee.....	244	...	...	Centerville.....	Houston.....	290	...	...
Americus.....	Sumter.....	13,472	11,389	9,281	Centralhatchee.....	Heard.....	174	239	201
Andersonville.....	Sumter.....	263	281	211	Chalybeate Springs.....	Meriwether.....	295	255	113
Apalachee.....	Morgan.....	158	178	255	Chamblee.....	De Kalb.....	6,635	3,445	1,081
Arabi.....	Crisp.....	303	376	388	Charles.....	Toombs.....	50	20	38
Arden (U).....	Polk.....	1,023	1,272	98	Chatsworth.....	Murray.....	1,184	1,214	1,001
Arcade.....	Jackson.....	108	114	278	Chauncey.....	Dodge.....	330	348	387
Argyle.....	Clintch.....	225	244	278	Chester.....	Dodge.....	377	315	281
	Calhoun.....				Chickamauga.....	Walker.....	1,824	1,747	1,665
Arlington.....	Early.....	1,462	1,382	1,337	Clarkeville.....	Habersham.....	1,352	1,106	850
Ashburn.....	Turner.....	3,291	2,918	2,266	Clarkston*.....	De Kalb.....	1,524	1,165	921
Athens.....	Clarke.....	31,355	28,180	20,650	Claxton.....	Evans.....	2,672	1,923	1,808
Atlanta.....	De Kalb.....	487,455	331,314	302,288	Clayton.....	Rabun.....	1,507	1,302	1,088
	Fulton.....				Clemont.....	Hall.....	268	323	297
Attepulgas.....	Decatur.....	567	457	315	Cleveland.....	White.....	657	589	471
Auburn.....	Barrow.....	374	301	286	Climax.....	Decatur.....	329	373	372
Augusta.....	Richmond.....	70,626	71,508	65,919	Cobb.....	Sumter.....	90	...	...
Austell.....	Cobb.....	1,867	1,413	1,229	Cobbtown.....	Tattnall.....	280	288	275
Avalon.....	Douglas.....	194	151	113	Cochran.....	Bleckley.....	4,714	3,357	2,464
Avera.....	Stephens.....	197	230	298	Colbert.....	Madison.....	425	407	345
Avondale Estates*.....	Jefferson.....	197	230	298	Coleman.....	Randolph.....	220	295	270
Baconton.....	De Kalb.....	1,646	1,070	569	Colemans Lake.....	Emanuel.....	34	...	...
Bainbridge.....	Mitchell.....	564	500	504	College Park.....	Clayton.....	23,469	14,535	8,213
Baldwin.....	Decatur.....	12,714	7,562	6,352	Collins.....	Fulton.....	565	638	712
	Banks.....				Colquitt.....	Tattnall.....			
Ball Ground.....	Habersham.....	698	490	402	Colquitt.....	Miller.....	1,556	1,664	1,416
	Cherokee.....				Columbus.....	Muscogee.....	116,779	79,611	53,280
Barnesville.....	Lamar.....	4,919	4,185	3,535	Comer.....	Madison.....	882	882	811
Barney.....	Brooks.....	165	157	154	Commerce.....	Jackson.....	3,551	3,351	3,294
Bartow.....	Jefferson.....	366	347	438	Concord.....	Pike.....	333	360	403
Barwick.....	Brooks.....	400	436	409	Conyers.....	Rockdale.....	2,881	2,003	1,619
	Thomas.....				Coolidge.....	Thomas.....	679	764	608
Baxley.....	Appling.....	4,268	3,409	2,916	Cordele.....	Crisp.....	10,609	9,462	7,929
Besch.....	Ware.....	53	62	87	Corinth.....	Heard.....	105	135	144
Benevolence.....	Randolph.....	123	157	190	Cornelia.....	Habersham.....	2,936	2,424	1,808
Berkeley Lake.....	Berkeley Lake.....	94	...	...	Cotton.....	Mitchell.....	108	146	125
Berlin.....	Colquitt.....	419	309	322	Covington.....	Newton.....	8,167	5,192	3,900
Bethlehem.....	Barrow.....	297	240	242	Crandall.....	Murray.....	208	202	213
Between.....	Walton.....	80	120	115	Crawford.....	Oglethorpe.....	541	555	812
Bibb City*.....	Muscogee.....	1,213	1,452	1,631	Crawfordville.....	Taliaferro.....	786	966	1,056
Bishop.....	Oconee.....	214	253	217	Crosland.....	Colquitt.....	95	127	220
Blackshear.....	Pierce.....	2,482	2,271	2,010	Culloden.....	Monroe.....	260	261	251
Blainsville.....	Union.....	437	430	458	Cumming.....	Forsyth.....	1,561	1,264	958
Blakely.....	Early.....	3,580	3,234	2,774	Cusseta.....	Chatahoochee.....	768	571	357
Bloomfield Gardens (U).....	Bibb.....	4,381	...	...	Cuthbert.....	Randolph.....	4,300	4,025	3,447
Blue Ridge.....	Fannin.....	1,406	1,718	1,362	Dacula.....	Gwinnett.....	440	369	315
Bluffton.....	Clay.....	176	244	246	Dahlonega.....	Lumpkin.....	2,604	2,152	1,294
Blythe.....	Burke.....	172	268	181	Daisy.....	Evans.....	229	195	294
	Richmond.....				Dallas.....	Paulding.....	2,065	1,817	1,922
Bogart.....	Clarke.....	403	459	379	Dalton.....	Whitfield.....	17,868	15,968	10,448
Boston.....	Oconee.....	1,357	1,035	1,099	Damascus.....	Early.....	297	402	477
Botswick.....	Thomas.....	272	287	318	Danburg.....	Wilkes.....	108	181	203
Bowdon.....	Morgan.....	1,548	1,155	1,024	Danielsville.....	Madison.....	362	298	333
Bowersville.....	Carroll.....	293	303	284	Danville.....	Twiggs.....	264	461	423
Bowman.....	Hart.....	654	714	634	Darien.....	Wilkinson.....	1,569	1,380	1,015
Boykin.....	Elbert.....	601	120	118	Deatsboro.....	McIntosh.....	417	469	533
Braselton.....	Miller.....	255	165	197	Dawson.....	Washington.....	5,062	4,411	3,681
Braswell.....	Jackson.....	14	25	56	Dawsonville.....	Dawson.....	307	318	319
Bremen.....	Paulding.....	3,132	2,299	1,708	Dearing.....	McDuffie.....	403	325	273
Brinson.....	Haralson.....	246	248	305	Decatur.....	De Kalb.....	22,026	21,635	16,561
Bristol.....	Decatur.....	162	137	114	Deepstep.....	Washington.....	139	159	174
Bronwood.....	Pierce.....	400	437	503	Demorest.....	Habersham.....	1,029	1,166	820
Brooklet.....	Terrell.....	557	536	134	Denton.....	Jeff Davis.....	1,726	273	254
Brooks.....	Bulloch.....	158	136	134	De Soto.....	Sumter.....	282	309	295
Broxton.....	Fayette.....	907	890	908	Dexter.....	Laurens.....	359	264	324
Brunswick.....	Coffee.....	21,703	17,954	15,035	Dickey.....	Calhoun.....	76	135	115
Buchanan.....	Glynn.....	753	651	504	Dillard.....	Rabun.....	204	186	204
Buckhead.....	Haralson.....	169	220	214	Dixie.....	Brooks.....	204	261	221
Buena Vista.....	Morgan.....	1,574	1,428	1,161	Dock Junction (U).....	Glynn.....	5,417	4,160	...
Burford.....	Marion.....	4,168	3,812	4,191	Doerun.....	Colquitt.....	1,037	902	832
Butler.....	Gwinnett.....	1,346	1,182	1,093	Donaldsonville.....	Seminole.....	2,621	2,569	1,718
Byromville.....	Taylor.....	349	288	275					
Byron.....	Dooley.....	1,138	379	305					

The revised population total for Denton is 255. The figure in the table includes population for an area misclassified as inside, rather than outside, the city limits. This error was discovered too late for correction in the detailed distributions.

Table 8.—POPULATION OF ALL INCORPORATED PLACES AND OF UNINCORPORATED PLACES OF 1,000 OR MORE: 1940 TO 1960—Con.

["U" denotes an unincorporated place. Asterisk (\*) denotes an incorporated place under 2,500 located in an urbanized area]

Place	County	1960	1950	1940	Place	County	1960	1950	1940
Doraville	De Kalb	4,437	472	300	Hephzibah	Richmond	676	525	516
Douglas	Coffee	8,736	7,428	5,175	Hiwassee	Towns	455	375	163
Douglasville	Douglas	4,462	3,400	2,555	Hickox	Brantley	71	139	83
Dublin	Laurens	13,814	10,232	7,814	Higgston	Montgomery	151	155	141
Ducktown	Forsyth	49	58	51	Hilltonia	Screven	353	318	246
Dudley	Laurens	360	272	259	Hinesville	Liberty	3,174	1,217	630
Duluth	Gwinnett	1,483	842	626	Hiram	Paulding	358	299	282
Du Pont	Clinch	210	285	332	Hoboken	Brantley	552	492	386
Durand	Meriwether	195	186	181	Hogansville	Troup	3,658	3,769	3,886
East Dublin	Laurens	1,677	...	...	Holly Springs	Cherokee	475	386	256
East Ellijay	Gilmer	501	549	460	Homeland	Charlton	508	276	213
East Griffin (U)	Spalding	1,715	1,539	...	Homer	Banks	612	340	283
East Juliette	Jones	201	303	321	Homerville	Clinch	2,634	1,787	1,522
Eastman	Dodge	5,118	3,597	3,311	Hoschton	Jackson	370	378	364
East Point	Fulton	35,633	21,080	12,403	Howell	Echols	141	169	174
East Thomaston	Upson	2,237	3,082	3,590	Hull	Madison	119	153	133
Eastville	Oconee	107	96	132	Ideal	Macon	432	318	238
Eatonton	Putnam	3,612	2,749	2,399	Ila	Madison	216	225	224
Edge Hill	Glascock	55	...	...	Iron City	Seminole	298	293	289
Edison	Calhoun	1,232	1,247	1,241	Irwinton	Wilkinson	673	700	589
Elberta	Houston	644	...	...	Ivey	Wilkinson	48	46	...
Elberton	Elbert	7,107	6,772	6,188	Jackson	Butts	2,545	2,053	1,917
Elizabeth (U)	Cobb	1,620	1,067	...	Jacksonville	Telfair	236	...	...
Elko	Houston	165	188	189	Jakin	Early	176	264	264
Ellaville	Schley	905	886	928	Jasper	Pickens	1,036	1,380	576
Ellenton	Colquitt	385	429	427	Jefferson	Jackson	1,746	2,040	1,839
Ellijay	Gilmer	1,320	1,527	1,497	Jeffersonville	Twiggs	1,013	787	804
Emerson	Bartow	666	508	453	Jenkinsburg	Butts	233	166	166
Enigma	Berrien	525	499	529	Jersey	Walton	170	182	188
Eton	Murray	275	297	239	Jesup	Wayne	7,304	4,605	2,903
Experiment (U)	Spalding	2,497	4,265	...	Jonesboro	Clayton	3,014	1,741	1,204
Fairburn	Fulton	2,470	1,889	1,502	Junction City	Talbot	226	259	326
Fairmount	Gordon	619	573	474	Kennesaw	Cobb	1,507	564	436
Fair Oaks (U)	Cobb	7,969	3,131	...	Kingsland	Camden	1,536	1,169	619
Farmington	Oconee	151	121	165	Kingston	Bartow	675	695	653
Farrar	Jasper	42	30	16	Kite	Johnson	424	447	472
Fayetteville	Fayette	1,389	1,032	832	La Fayette	Walker	5,588	4,884	3,509
Finleyson	Fulaski	82	79	129	La Grange	Troup	23,632	25,025	21,983
Fitzgerald	Ben Hill	8,781	8,130	7,388	Lake	Clayton	1,042	...	...
Flemington	Liberty	149	90	...	Lakeland	Lanier	2,236	1,551	1,502
Flovilla	Butts	284	315	240	Lake Park	Lowndes	338	334	387
Flowers Branch	Hall	741	610	506	Lavonia	Franklin	1,766	1,667	1,667
Folkston	Charlton	1,810	1,515	1,024	Lawrenceville	Gwinnett	3,804	2,932	2,223
Forest Park	Clayton	14,201	2,653	577	Leary	Calhoun	848	721	717
Forsyth	Monroe	3,697	3,125	2,372	Leesburg	Lee	774	659	716
Fort Gaines	Clay	1,320	1,339	1,357	Lenox	Cook	802	789	547
Fort Oglethorpe*	Catoosa	2,251	692	...	Leslie	Sumter	494	417	479
Fort Valley	Walker	8,310	6,820	4,953	Lexington	Oglethorpe	376	514	517
Franklin	Peach	603	425	390	Lilburn	Gwinnett	753	...	...
Franklin Springs	Franklin	278	182	116	Lilly	Dooly	136	177	214
Funston	Colquitt	293	233	199	Lincoln Park (U)	Upson	1,840	1,575	...
Gainesville	Hall	16,523	11,936	10,243	Lincolnton	Lincoln	1,450	1,315	894
Gainesville Cotton Mills (U)	Hall	2,207	1,708	...	Lindale-Silver Creek (U)	Floyd	2,800	3,234	...
Garden City	Chatham	5,451	1,557	734	Linwood	Walker	760	858	302
Garfield	Emanuel	225	213	291	Lithonia	De Kalb	1,657	1,538	1,554
Gay	Meriwether	194	241	262	Locust Grove	Henry	369	405	349
Geneva	Talbot	261	209	203	Loganville	Gwinnett	926	699	627
Georgetown	Quitman	554	550	367	Lone Oak	Walton	122	120	137
Gibson	Glascock	479	460	474	Louisville	Meriwether	2,413	2,231	1,803
Gillsville	Banks	140	152	157	Lovejoy	Clayton	191	204	114
Girard	Burke	248	244	300	Lovett	Laurens	61	80	125
Glennville	Tattnall	2,791	2,327	1,674	Ludowici	Long	1,578	1,332	866
Glenwood	Wheeler	682	684	625	Lula	Banks	597	378	316
Godfrey	Morgan	181	168	197	Lumber City	Hall	...	...	...
Good Hope	Walton	165	189	219	Lumpkin	Telfair	1,360	1,232	1,044
Gordon	Wilkinson	1,793	1,761	1,524	Luthersville	Wheeler	1,348	1,209	1,210
Graham	Appling	130	160	165	Luther'sville	Stewart	282	312	354
Grantville	Coweta	1,158	1,359	1,267	Iyerly	Meriwether	409	524	368
Gratis	Walton	64	70	105	Lyons	Chattooga	3,219	2,799	1,900
Gray	Jones	1,320	866	698	McCaysville	Toombs	1,871	2,067	1,832
Graysen	Gwinnett	228	227	228	McDonough	Fannin	2,224	1,635	1,232
Graysville	Catoosa	138	120	126	McIntyre	Henry	316	194	209
Greensboro	Greene	2,773	2,688	2,459	McRae	Wilkinson	2,738	1,904	1,595
Greenville	Meriwether	726	733	683	Mableton (U)	Telfair	7,127	...	...
Griffin	Spalding	21,735	13,982	13,222	Macon	Cobb	69,764	70,252	57,865
Grovetown	Columbia	1,396	...	...	Madison	Bibb	2,680	2,489	2,045
Quyton	Effingham	670	633	549	Manassas	Morgan	154	128	165
Hagan	Evans	552	525	685	Manchester	Tattnall	4,115	4,036	3,462
Hahira	Lowndes	1,297	1,010	980	Manfield	Meriwether	394	446	432
Hamilton	Harris	396	449	473	Marietta	Newton	25,565	20,687	8,667
Hampton	Henry	1,253	864	619	Marietta East (U)	Cobb	4,535	...	...
Hapeville	Fulton	10,082	8,560	5,059	Marshallville	Cobb	1,308	1,121	905
Haralson	Coweta	141	142	108	Martin	Macon	209	207	242
Harlem	Meriwether	1,423	1,033	736	Mathews	Stephens	106	100	145
Harrison	Columbia	209	261	298	Maxeys	Jefferson	149	204	226
Hartwell	Washington	4,599	2,964	2,372	Maysville	Oglethorpe	553	533	514
Hawkinsville	Hart	3,967	3,342	3,000	Meansville	Banks	335	224	193
Hazlehurst	Pulaski	3,699	2,687	1,732	Meigs	Jackson	1,236	1,125	927
Hebardville (U)	Jeff Davis	2,758	1,113	...	Menlo	Pike	466	453	414
Helen	Ware	227	191	198	Merrillville	Mitchell	111	109	121
Helena	White	1,290	1,027	1,073		Thomas			

Table 8.—POPULATION OF ALL INCORPORATED PLACES AND OF UNINCORPORATED PLACES OF 1,000 OR MORE: 1940 TO 1960—Con.

["U" denotes an unincorporated place. Asterisk (\*) denotes an incorporated place under 2,500 located in an urbanized area]

Place	County	1960	1950	1940	Place	County	1960	1950	1940
Metasville.....	Wilkes.....	73	82	169	Plains.....	Sumter.....	572	546	528
Metcoalf.....	Thomas.....	241	206	161	Plainville.....	Gordon.....	161	142	132
Metter.....	Candler.....	2,362	2,091	1,823	Pocotaligo.....	Madison.....	71	68	52
Middleton.....	Elbert.....	106	144	224	Pooler.....	Chatham.....	1,073	818	736
Midville.....	Burke.....	676	682	780	Portal.....	Bulloch.....	494	532	556
Midway.....	Liberty.....	240	228	96	Porterdale.....	Newton.....	2,365	3,207	3,116
Midway-Hardwick (U).....	Baldwin.....	16,909	14,774	...	Port Wentworth.....	Chatham.....	3,705	...	...
Milan.....	Dodge.....	786	750	748	Poulan.....	Worth.....	736	750	670
Milledgeville.....	Telfair.....	11,117	8,835	6,778	Powder Springs.....	Cobb.....	746	619	431
Millen.....	Jenkins.....	3,633	3,449	2,820	Preston.....	Webster.....	232	260	349
Milner.....	Lamar.....	305	345	352	Frimrose.....	Meriwether.....	35	24	59
Milstead (U).....	Rockdale.....	1,047	1,075	...	Pulaski.....	Candler.....	155	234	241
Mineral Bluff.....	Fannin.....	149	209	181	Quitman.....	Brooks.....	5,071	4,769	4,450
Minter.....	Laurens.....	147	143	135	Raleigh.....	Meriwether.....	55	48	94
Mitchell.....	Glascock.....	184	240	228	Ranger.....	Gordon.....	161	183	160
Modoc.....	Emanuel.....	33	32	...	Ray City.....	Berrien.....	713	576	638
Molena.....	Pike.....	279	307	310	Rebecca.....	Turner.....	278	295	342
Monroe.....	Walton.....	6,826	4,542	4,168	Reidsville.....	Tattnall.....	1,229	1,266	805
Montezuma.....	Macon.....	3,744	2,921	2,346	Remerton.....	Lowndes.....	571	...	...
Monticello.....	Jasper.....	1,931	1,918	1,746	Reno.....	Grady.....	90	108	53
Montrose.....	Laurens.....	236	242	90	Rentz.....	Laurens.....	307	302	319
Moreland.....	Coweta.....	329	306	321	Rest Haven.....	Gwinnett.....	167	147	91
Morgan.....	Calhoun.....	293	304	282	Reynolds.....	Taylor.....	1,087	906	871
Morganton.....	Fannin.....	211	244	285	Rhine.....	Dodge.....	485	514	463
Morrow.....	Clayton.....	580	326	...	Riceboro.....	Liberty.....	259	267	364
Morven.....	Brooks.....	476	474	512	Richland.....	Stewart.....	1,472	1,571	1,497
Moultrie.....	Colquitt.....	15,764	11,639	10,147	Riddleville.....	Washington.....	111	106	115
Mountain City.....	Rabun.....	590	524	524	Rincon.....	Effingham.....	1,057	424	285
Mountain Park.....	Fulton.....	62	15	10	Ringgold.....	Catoosa.....	1,311	1,192	882
Mount Airy.....	Heberham.....	417	416	437	Riverdale.....	Clayton.....	1,045	263	207
Mount Vernon.....	Montgomery.....	1,166	990	900	Riverside.....	Colquitt.....	329	395	307
Mountville.....	Troup.....	139	142	298	Roberta.....	Crawford.....	714	673	535
Mount Zion.....	Carroll.....	211	141	84	Rochelle.....	Wilcox.....	1,235	1,097	1,175
Mystic.....	Irwin.....	274	281	256	Rockmart.....	Polk.....	3,938	3,821	3,764
Nahunta.....	Brantley.....	952	739	561	Rocky Ford.....	Screven.....	241	278	320
Nashville.....	Berrien.....	4,070	3,414	2,449	Rocky Mount.....	Meriwether.....	83	27	64
Naylor.....	Lowndes.....	290	261	261	Rome.....	Floyd.....	32,226	29,615	26,282
Nelson.....	Cherokee.....	658	645	679	Roopville.....	Carroll.....	203	202	230
Newborn.....	Pickens.....	283	298	307	Rossville.....	Walker.....	4,665	3,892	3,538
Newington.....	Jasper.....	399	429	366	Roswell.....	Fulton.....	2,983	2,123	1,622
Newman.....	Newton.....	12,169	8,218	7,186	Royston.....	Franklin.....	2,333	2,039	1,549
Newton.....	Screven.....	529	503	514	Ruckersville.....	Hart.....	64	74	65
Nicholls.....	Coweta.....	930	806	660	Russell.....	Madison.....	163	129	126
Nicholson.....	Baker.....	359	252	212	Rutledge.....	Barrow.....	478	482	550
Norcross*.....	Coffee.....	1,605	1,340	979	St. Marks.....	Morgan.....	28	43	48
Norman Park.....	Jackson.....	891	832	587	St. Marys.....	Meriwether.....	28	43	48
Normantown.....	Gwinnett.....	49	78	122	St. Simons (U).....	Camden.....	3,199	1,348	733
North Atlanta.....	Colquitt.....	12,661	5,930	1,365	Sale City.....	Glynn.....	275	289	329
North Canton (U).....	Toombs.....	1,996	1,913	...	Sandersville.....	Mitchell.....	4,425	289	329
North High Shoals.....	De Kalb.....	122	124	...	Santa Claus.....	Washington.....	5	4,480	3,566
Norwood.....	Cherokee.....	294	268	269	Sardis.....	Toombs.....	5	...	...
Nunee.....	Oconee.....	18	82	155	Sasser.....	Burke.....	829	695	667
Oakfield.....	Warren.....	141	108	127	Savannah.....	Terrell.....	382	371	365
Oakman.....	Emanuel.....	156	127	...	Savannah Beach.....	Chatham.....	149,245	119,638	95,996
Oak Park.....	Gordon.....	302	308	208	Scotland.....	Chatham.....	1,385	1,036	644
Oakwood.....	Emanuel.....	218	225	207	Scott.....	Telfair.....	236	218	238
Ochlocknee.....	Hall.....	502	503	429	Scott.....	Wheeler.....	149	194	256
Ocilla.....	Thomas.....	3,217	2,697	2,124	Seneca.....	Wayne.....	1,010	752	664
Odeasdale.....	Irwin.....	142	55	79	Seville.....	Coweta.....	782	770	679
Odum.....	Meriwether.....	404	389	469	Shady Dale.....	Wilcox.....	179	187	245
Oglethorpe.....	Wayne.....	1,169	1,204	1,048	Shannon (U).....	Jasper.....	201	253	159
Ochopee.....	Mecon.....	51	53	135	Sharon.....	Floyd.....	1,629	1,676	...
Oliver.....	Toombs.....	192	223	211	Sharpsburg.....	Talaferrro.....	264	224	282
Omaha.....	Screven.....	174	217	211	Shellman.....	Coweta.....	1,55	133	114
Omega.....	Stewart.....	940	966	608	Silham.....	Randolph.....	1,050	1,090	1,063
Orchard Hill.....	Tift.....	105	82	89	Smithonia.....	Greene.....	321	324	318
Osterfield.....	Spalding.....	82	147	118	Smithville.....	Oglethorpe.....	30	80	99
Oxford.....	Irwin.....	1,047	817	616	Smyrna.....	Lee.....	732	676	619
Palmetto.....	Newton.....	1,466	1,257	1,029	Snellville.....	Sumter.....	10,157	2,005	1,440
Parrott.....	Coweta.....	280	291	337	Social Circle.....	Cobb.....	1,780	1,685	1,735
Patterson.....	Fulton.....	719	656	541	Soperton.....	Gwinnett.....	2,317	2,009	204
Pavo.....	Terrell.....	817	806	706	Sparta.....	Walton.....	1,921	1,685	1,735
Payne*.....	Pierce.....	346	520	535	Springfield.....	Treutlen.....	858	1,667	1,339
Pearson.....	Brooks.....	1,615	1,402	1,057	Spring Place.....	Cook.....	194	887	695
Pelham.....	Thomas.....	4,609	4,365	2,579	Springvale.....	Hancock.....	1,921	1,954	1,872
Pembroke.....	Elbb.....	1,450	1,171	1,039	Stapleton.....	Effingham.....	57	627	458
Pendergrass.....	Atkinson.....	215	189	189	Statesboro.....	Murray.....	356	214	219
Penfield.....	Mitchell.....	105	74	218	Statham.....	Randolph.....	8,356	355	342
Pepperton.....	Bryan.....	523	572	585	Stillmore.....	Bulloch.....	711	626	605
Perry.....	Jackson.....	6,032	3,849	1,542	Stockbridge.....	Emanuel.....	354	420	493
Phillipsburg (U).....	Greene.....	2,037	...	...	Stone Mountain.....	Henry.....	1,201	717	443
Pinehurst.....	Butts.....	457	430	474	Sugar Hill.....	De Kalb.....	1,976	1,899	1,408
Pine Lake.....	Pepperton.....	738	566	2	Sugartown.....	Gwinnett.....	1,175	783	599
Pine Mountain.....	Perry.....	790	817	709	Summerville.....	Gordon.....	165	214	239
Pineora.....	Houston.....	210	...	...	Summer.....	Chattooga.....	4,706	3,973	1,358
Pine Park.....	Phillipsburg (U).....	82	126	181	Sunnyside.....	Worth.....	193	226	340
Pineview.....	Grady.....	369	310	350	Surrency.....	Spalding.....	512	190	123
Pitts.....	Wilcox.....	388	397	371	Swanee.....	Appling.....	342	295	431
Plainfield.....	Wilcox.....	84	117	182	Swainsboro.....	Gwinnett.....	5,943	357	179
	Dodge.....					Emanuel.....		4,300	3,575

\* Name changed from Chipley since 1950.

Table 8.—POPULATION OF ALL INCORPORATED PLACES AND OF UNINCORPORATED PLACES OF 1,000 OR MORE: 1940 TO 1960—Con.

["U" denotes an unincorporated place. Asterisk (\*) denotes an incorporated place under 2,500 located in an urbanized area]

Place	County	1960	1950	1940	Place	County	1960	1950	1940
Sycamore	Turner	501	624	601	Vienna	Dooley	2,099	2,202	2,063
Sylvania	Soreven	3,469	2,939	2,531	Villa Rica	Carroll	3,450	1,703	1,522
Sylvester	Worth	3,610	2,623	2,191	Waco	Douglas			
Talbotton	Talbot	1,163	1,175	1,060	Wadley	Haralson	381	328	304
Talking Rock	Pickens	84	94	103	Waleska	Jefferson	1,898	1,624	1,133
Tallapoosa	Haralson	2,744	2,826	2,338	Walnut Grove	Cherokee	479	385	264
Tallulah Falls	Habersham	225	239	73	Warner Robins	Walton	119	121	117
Talmo	Rabun				162	152	131	Warrenton	Meriwether
Tarrytown	Jackson	191	250	298	Waycross	Houston	18,633	7,986	
Taylorville	Montgomery	226	260	233	Waynesboro	Warren	1,770	1,442	1,284
Tazewell	Polk				112	...	...	Worth	434
Temple	Marion	788	676	624	Wilkes	Wilkes	4,440	3,802	3,537
Tennille	Carroll	1,837	1,713	1,758	Winterville	Oconee	758	662	558
The Rock	Washington	115	147	179	Winterville	Harris	712	690	569
Thomaston	Upson	9,336	6,580	6,396	Wraycross	Ware	20,944	18,899	16,763
Thomasville	Upson	18,246	14,424	12,683	Waynesboro	Burke	5,359	4,461	3,793
Thomson	Thomas	4,522	3,489	3,088	Wesley	Emanuel	79	66	...
Thunderbolt*	McDuffie	1,925	1,238	886	Weston	Webster	120	162	173
Tifton	Chatham	9,903	6,831	5,228	West Point	Harris	4,610	4,076	3,591
Tiger	Tift	277	269	289	Whigham	Troup			
Tignall	Rabun	556	502	567	White	Grady	453	471	533
Toccoa	Wilkes	7,303	6,781	5,494	Whitehall	Bartow	439	454	474
Tocombsboro	Stephens	764	711	593	White Plains	Clarke	409	493	599
Towns	Wilkinson	91	96	216	Whitesburg	Greene	273	359	364
Trenton	Telfair	1,301	755	570	Willacoochee	Carroll	366	400	341
Trion	Dade	2,227	3,028	3,800	Williamson	White Sulphur Springs	156	32	3
Turin	Chattooga	183	185	146	Winder	Atkinson	1,061	987	903
Twin City	Ocnetta	1,095	1,018	1,019	Winterville	Pike	215	211	217
Tyrome	Emanuel	124	156	118	Woodbine	Barrow	5,555	4,604	3,974
Ty Ty	Fayette	461	478	442	Woodbury	Clarke	497	453	503
Unadilla	Tift	1,304	1,098	1,137	Woodland	Camden	845	750	373
Union City	Dooley	2,118	1,490	884	Woodstock	Meriwether	1,230	985	865
Union Point	Fulton	1,615	1,724	1,566	Woodville	Talbot	720	621	489
Unionville (U)	Greene	1,607	...	...	Woodville	Cherokee	726	545	389
Uvalda	Tift	589	511	592	Wrens	Greene	372	484	458
Valdosta	Montgomery	30,652	20,046	15,595	Wrightsville	Fayette	114	90	115
Vadon	Lowndes	152	145	167	Yatesville	Jefferson	1,628	1,380	1,192
Vernonburg	Hart	65	...	...	Young Harris	Upson	2,056	1,750	1,760
Vidalia	Chatham	7,569	5,819	4,109	Zebulon	Upson	354	290	240
Vidette	Toombs	103	159	160		Towns	743	450	258
	Burke					Pike	563	539	543

Table 9.—1960 POPULATION OF AREAS ANNEXED BETWEEN 1950 AND 1960 BY INCORPORATED PLACES HAVING 2,500 INHABITANTS OR MORE IN 1950

[Minus sign (-) denotes decrease]

Incorporated place	1960 population			1950 population total	Increase, 1960 to 1950, in 1950 area	Incorporated place	1960 population			1950 population total	Increase, 1960 to 1950, in 1950 area
	Total	In 1950 area	In annexed area				Total	In 1950 area	In annexed area		
Adel	4,321	3,788	533	2,776	1,012	Hapeville	10,082	9,843	239	8,560	1,283
Albany	55,890	38,321	17,569	31,155	7,166	Hazlehurst	3,699	3,654	35	2,687	977
Alma	3,515	3,056	459	2,588	468	Jesup	7,304	6,970	334	4,605	2,365
Americus	13,472	12,371	1,101	11,389	982	Lawrenceville	3,804	2,451	353	2,932	519
Athens	31,355	31,330	25	28,180	3,150	Macon	69,764	65,129	4,635	70,252	-5,123
Atlanta	487,455	315,988	171,467	331,314	-15,326	Manchester	4,115	3,931	184	4,036	-105
Augusta	70,626	62,655	7,971	71,508	-8,853	Marietta	25,565	21,840	3,725	20,687	1,153
Bainbridge	12,714	8,769	3,945	7,562	1,207	Milledgeville	11,117	10,287	830	8,835	1,452
Brunswick	21,703	21,558	145	17,954	3,604	Monroe	6,826	5,637	1,189	4,542	1,095
Cairo	7,427	6,263	1,064	5,577	786	Montezuma	3,744	3,513	231	2,921	592
Calhoun	3,587	3,388	199	3,231	157	Moultrie	15,764	11,849	3,915	11,639	210
Carrollton	10,973	8,405	2,568	7,753	652	Newnan	12,169	9,588	2,581	8,218	1,370
Cartersville	8,668	7,553	1,115	7,270	283	Rockmart	3,938	3,736	202	3,821	-85
Cedartown	9,340	9,042	298	9,470	-428	Rome	32,226	29,733	2,493	29,615	118
Chamblee	6,635	5,132	1,503	3,445	1,687	Rossville	4,665	4,263	402	3,892	371
College Park	23,469	18,964	4,505	14,535	4,429	Sandersville	5,425	5,425	...	4,480	945
Columbus	116,779	73,320	43,459	79,611	-6,291	Savannah	149,245	124,082	25,163	119,638	4,444
Commerce	3,551	3,315	236	3,351	-36	Statesboro	8,356	7,224	1,132	6,097	1,127
Cordele	10,609	10,215	394	9,462	753	Sylvester	3,610	3,223	387	6,623	610
Covington	8,167	6,437	1,730	5,192	1,245	Thomaston	9,336	9,157	179	6,580	2,577
Dalton	17,868	17,712	156	15,968	1,744	Thomasville	18,246	14,826	3,420	14,424	402
Douglas	8,736	8,591	145	7,428	1,163	Thomson	4,522	4,050	472	3,489	561
Dublin	13,814	13,000	814	10,232	2,768	Tifton	9,903	7,143	2,760	6,312	312
Eastman	5,118	4,624	494	3,597	1,027	Toccoa	7,303	6,848	455	6,781	67
East Point	35,633	32,186	3,447	21,080	11,106	Valdosta	30,652	23,303	7,349	20,046	3,257
Fitzgerald	8,781	8,730	51	8,130	600	Warner Robins	18,633	10,895	7,738	7,986	2,909
Forest Park	14,201	4,799	9,402	2,653	2,146	Waycross	20,944	20,494	450	18,899	1,595
Gainesville	16,523	12,387	4,136	11,936	451	Waynesboro	5,359	5,247	112	4,461	786
Griffin	21,735	15,260	6,475	13,982	1,278	West Point	4,610	3,352	1,258	4,076	-724

Table 10.—POPULATION OF URBANIZED AREAS: 1960 AND 1950

Area	1960	1950	Area	1960	1950
<b>ALBANY (GA.) URBANIZED AREA</b>			<b>CHATTANOOGA (TENN.-GA.) URBANIZED AREA</b>		
The area.....	58,353	( <sup>1</sup> )	That part of the area in Georgia <sup>5</sup> .....	20,299	9,902
Albany city.....	55,890	...	The area includes the following census county divisions and parts of census county divisions:		
Outside central city.....	2,463	...	Catoosa County (part).....	6,931	<sup>2</sup> 2,248
The area includes the following census county divisions and parts of census county divisions:			Fort Oglethorpe-Westside division (part).....	2,687	...
Dougherty County (part).....	58,353	...	Fort Oglethorpe town (part).....	2,192	( <sup>3</sup> )
Albany division.....	55,890	...	Lakeview division (part).....	4,244	...
Albany city.....	55,890	...	Walker County (part).....	13,368	<sup>2</sup> 7,654
Central Dougherty division (part).....	2,463	...	Beverly Hills division (part).....	6,871	...
<b>ATLANTA (GA.) URBANIZED AREA</b>			Fort Oglethorpe town (part).....	59	( <sup>3</sup> )
The area.....	768,125	507,887	Chattanooga Valley division (part).....	1,272	...
Atlanta city.....	487,455	331,314	Fairyland division (part).....	560	...
Outside central city.....	280,670	176,573	Rossville division.....	4,665	...
The area includes the following census county divisions and parts of census county divisions:			Rossville city.....	4,665	3,892
Clayton County (part).....	27,268	<sup>2</sup> 3,734	<b>COLUMBUS (GA.-ALA.) URBANIZED AREA</b>		
College Park division (part).....	9,705	...	The area.....	158,382	118,485
College Park city (part).....	8,306	3,307	Columbus city.....	116,779	79,611
Forest Park division (part).....	17,563	...	Outside central city.....	41,603	38,874
Forest Park town.....	14,201	( <sup>3</sup> )	The area includes the following census county divisions and parts of census county divisions:		
De Kalb County (part).....	217,165	<sup>2</sup> 97,077	In Georgia.....	130,752	95,180
Atlanta division.....	41,332	...	Muscookee County (part).....	130,752	<sup>2</sup> 95,180
Atlanta city (part).....	41,332	37,535	Columbus division.....	117,992	...
Avondale Estates-Belvedere division (part).....	22,925	...	Bibb City town.....	1,213	1,452
Avondale Estates city.....	1,646	1,070	Columbus city.....	116,779	79,611
Candler-Glenwood division (part).....	23,423	...	Edgewood division (part).....	533	...
Chamblee-Doraville division (part).....	28,711	...	Gentian division (part).....	8,140	...
Chamblee city.....	6,635	3,445	St. Marys division (part).....	4,087	...
Doraville city.....	4,437	472	In Alabama.....	27,630	23,305
Clarkston division (part).....	2,955	...	Russell County (part).....	27,630	<sup>6</sup> 23,305
Clarkston town.....	1,524	1,165	Phenix City division.....	27,630	...
Constitution-Panthersville division (part).....	9,799	...	Phenix City.....	27,630	23,305
Decatur division.....	22,026	...	<b>MACON (GA.) URBANIZED AREA</b>		
Decatur city.....	22,026	21,635	The area.....	114,161	93,499
Druid Hills-North Decatur division.....	22,559	...	Macon city.....	69,764	70,252
North Atlanta division.....	12,661	...	Outside central city.....	44,397	23,247
North Atlanta village.....	12,661	5,930	The area includes the following census county divisions and parts of census county divisions:		
North Druid Hills division.....	17,157	...	Bibb County (part).....	114,161	<sup>2</sup> 93,499
Scottdale division.....	9,175	...	Bloomfield division (part).....	597	...
Tucker division (part).....	4,442	...	Howard division (part).....	735	...
Fulton County (part).....	518,801	<sup>2</sup> 407,076	Macon division.....	69,764	...
Atlanta division.....	446,123	...	Macon city.....	69,764	70,252
Atlanta city (part).....	446,123	293,779	South Macon division (part).....	23,295	...
College Park division (part).....	15,818	...	Walnut Creek division (part).....	8,259	...
College Park city (part).....	15,163	11,228	West Macon division (part).....	11,511	...
East Point division.....	35,633	...	Payne city.....	346	520
East Point city.....	35,633	21,080	<b>SAVANNAH (GA.) URBANIZED AREA</b>		
Hapeville division.....	10,082	...	The area.....	169,887	128,196
Hapeville city.....	10,082	8,560	Savannah city.....	149,245	119,638
Sandy Springs division (part).....	11,145	...	Outside central city.....	20,642	8,558
Gwinnet County (part).....	4,891	( <sup>3</sup> )	The area includes the following census county divisions and parts of census county divisions:		
Norcross division (part).....	4,891	...	Chatham County (part).....	169,887	<sup>2</sup> 128,196
Norcross city.....	1,605	...	Garden City division (part).....	6,850	...
<b>AUGUSTA (GA.-S.C.) URBANIZED AREA</b>			Garden City town.....	5,451	1,557
The area.....	123,698	87,733	Montgomery division (part).....	1,903	...
Augusta city.....	70,626	71,508	Port Wentworth division (part).....	4,267	...
Outside central city.....	53,072	16,225	Port Wentworth city.....	3,705	( <sup>7</sup> )
The area includes the following census county divisions and parts of census county divisions:			Savannah division.....	149,245	...
In Georgia.....	110,870	84,074	Savannah city.....	149,245	119,638
Richmond County (part).....	110,870	<sup>2</sup> 84,074	Thunderbolt division (part).....	4,102	...
Augusta division.....	70,626	...	Thunderbolt town.....	1,925	1,238
Augusta city.....	70,626	71,508	West Savannah division (part).....	3,520	...
Forest Hills division (part).....	2,573	...	<b>ALBANY (GA.) URBANIZED AREA</b>		
Lakemont division (part).....	3,852	...	The area.....	58,353	( <sup>1</sup> )
Neco division (part).....	17,574	...	Albany city.....	55,890	...
South Wellsville division (part).....	3,690	...	Outside central city.....	2,463	...
Turpin Place division.....	7,189	...	<b>CHATTANOOGA (TENN.-GA.) URBANIZED AREA</b>		
Tuxedo Park division.....	5,366	...	That part of the area in Georgia <sup>5</sup> .....	20,299	9,902
In South Carolina.....	12,828	3,659	The area includes the following census county divisions and parts of census county divisions:		
Aiken County (part).....	12,828	<sup>4</sup> 3,659	Catoosa County (part).....	6,931	<sup>2</sup> 2,248
North Augusta division (part).....	12,828	...	Fort Oglethorpe-Westside division (part).....	2,687	...
North Augusta city.....	10,348	3,659	Fort Oglethorpe town (part).....	2,192	( <sup>3</sup> )
			Lakeview division (part).....	4,244	...
			Walker County (part).....	13,368	<sup>2</sup> 7,654
			Beverly Hills division (part).....	6,871	...
			Fort Oglethorpe town (part).....	59	( <sup>3</sup> )
			Chattanooga Valley division (part).....	1,272	...
			Fairyland division (part).....	560	...
			Rossville division.....	4,665	...
			Rossville city.....	4,665	3,892
			<b>COLUMBUS (GA.-ALA.) URBANIZED AREA</b>		
			The area.....	158,382	118,485
			Columbus city.....	116,779	79,611
			Outside central city.....	41,603	38,874
			The area includes the following census county divisions and parts of census county divisions:		
			In Georgia.....	130,752	95,180
			Muscookee County (part).....	130,752	<sup>2</sup> 95,180
			Columbus division.....	117,992	...
			Bibb City town.....	1,213	1,452
			Columbus city.....	116,779	79,611
			Edgewood division (part).....	533	...
			Gentian division (part).....	8,140	...
			St. Marys division (part).....	4,087	...
			In Alabama.....	27,630	23,305
			Russell County (part).....	27,630	<sup>6</sup> 23,305
			Phenix City division.....	27,630	...
			Phenix City.....	27,630	23,305
			<b>MACON (GA.) URBANIZED AREA</b>		
			The area.....	114,161	93,499
			Macon city.....	69,764	70,252
			Outside central city.....	44,397	23,247
			The area includes the following census county divisions and parts of census county divisions:		
			Bibb County (part).....	114,161	<sup>2</sup> 93,499
			Bloomfield division (part).....	597	...
			Howard division (part).....	735	...
			Macon division.....	69,764	...
			Macon city.....	69,764	70,252
			South Macon division (part).....	23,295	...
			Walnut Creek division (part).....	8,259	...
			West Macon division (part).....	11,511	...
			Payne city.....	346	520
			<b>SAVANNAH (GA.) URBANIZED AREA</b>		
			The area.....	169,887	128,196
			Savannah city.....	149,245	119,638
			Outside central city.....	20,642	8,558
			The area includes the following census county divisions and parts of census county divisions:		
			Chatham County (part).....	169,887	<sup>2</sup> 128,196
			Garden City division (part).....	6,850	...
			Garden City town.....	5,451	1,557
			Montgomery division (part).....	1,903	...
			Port Wentworth division (part).....	4,267	...
			Port Wentworth city.....	3,705	( <sup>7</sup> )
			Savannah division.....	149,245	...
			Savannah city.....	149,245	119,638
			Thunderbolt division (part).....	4,102	...
			Thunderbolt town.....	1,925	1,238
			West Savannah division (part).....	3,520	...

<sup>1</sup> There was no urbanized area delineated for Albany for the 1950 Census.

<sup>2</sup> County returned in 1950 by militia districts; data by census county divisions not available.

<sup>3</sup> Not in area in 1950.

<sup>4</sup> County returned in 1950 by townships; data by census county divisions not available.

<sup>5</sup> For the map and population of the entire Chattanooga (Tenn.-Ga.) Urbanized Area, see the corresponding report for Tennessee.

<sup>6</sup> County returned in 1950 by election districts; data by census county divisions not available.

<sup>7</sup> Incorporated since 1950.

Table 11.—POPULATION OF STANDARD METROPOLITAN STATISTICAL AREAS: 1960 AND 1950

[Data relate to areas as defined for 1960. Minus sign (-) denotes decrease]

Standard metropolitan statistical area, central city, and other component areas	1960	1950	Increase		Standard metropolitan statistical area, central city, and other component areas	1960	1950	Increase	
			Number	Percent				Number	Percent
<b>ALBANY, GA.</b> (Dougherty County)					<b>COLUMBUS, GA.—ALA.</b>				
Total.....	75,680	43,617	32,063	73.5	Total.....	217,985	170,541	47,444	27.8
Albany city.....	55,890	31,155	24,735	79.4	Columbus city.....	116,779	79,611	37,168	46.7
Outside central city.....	19,790	12,462	7,328	58.8	Outside central city.....	101,206	90,930	10,276	11.3
<b>ATLANTA, GA.</b>					<b>CHATTAHOOCHEE COUNTY, GA.</b>				
Total.....	1,017,188	726,989	290,199	39.9	Macon city.....	13,011	12,149	862	7.1
Atlanta city.....	487,455	331,314	156,141	47.1	Outside central city.....	158,623	118,028	40,595	34.4
Outside central city.....	529,733	395,675	134,058	33.9	Russell County, Ala.....	46,351	40,364	5,987	14.8
Clayton County.....	46,365	22,872	23,493	102.7	<b>MACON, GA.</b>				
Cobb County.....	114,174	61,830	52,344	84.7	Total.....	180,403	135,043	45,360	33.6
De Kalb County.....	256,782	136,395	120,387	88.3	Macon city.....	69,764	70,252	-488	-0.7
Fulton County.....	556,326	473,572	82,754	17.5	Outside central city.....	110,639	64,791	45,848	70.8
Gwinnett County.....	43,541	32,320	11,221	34.7	Bibb County.....	141,249	114,079	27,170	23.8
<b>AUGUSTA, GA.—S.C.</b>					<b>HOUSTON COUNTY, GA.</b>				
Total.....	216,639	162,013	54,626	33.7	Total.....	39,154	20,964	18,190	86.8
Augusta city.....	70,626	71,508	-882	-1.2	<b>SAVANNAH, GA.</b> (Chatham County)				
Outside central city.....	146,013	90,505	55,508	61.3	Total.....	188,299	151,481	36,818	24.3
Richmond County, Ga.....	135,601	108,876	26,725	24.5	Savannah city.....	149,245	119,638	29,607	24.7
Aiken County, S.C.....	81,038	53,137	27,901	52.5	Outside central city.....	39,054	31,843	7,211	22.6
<b>CHATTANOOGA, TENN.—GA.</b>									
That part of the area in Georgia.....	45,264	38,198	7,066	18.5					
Walker County, Ga.....	45,264	38,198	7,066	18.5					

Table 12.—POPULATION OF THE STATE AND OF STANDARD METROPOLITAN STATISTICAL AREAS, BY TYPE OF RESIDENCE: 1960

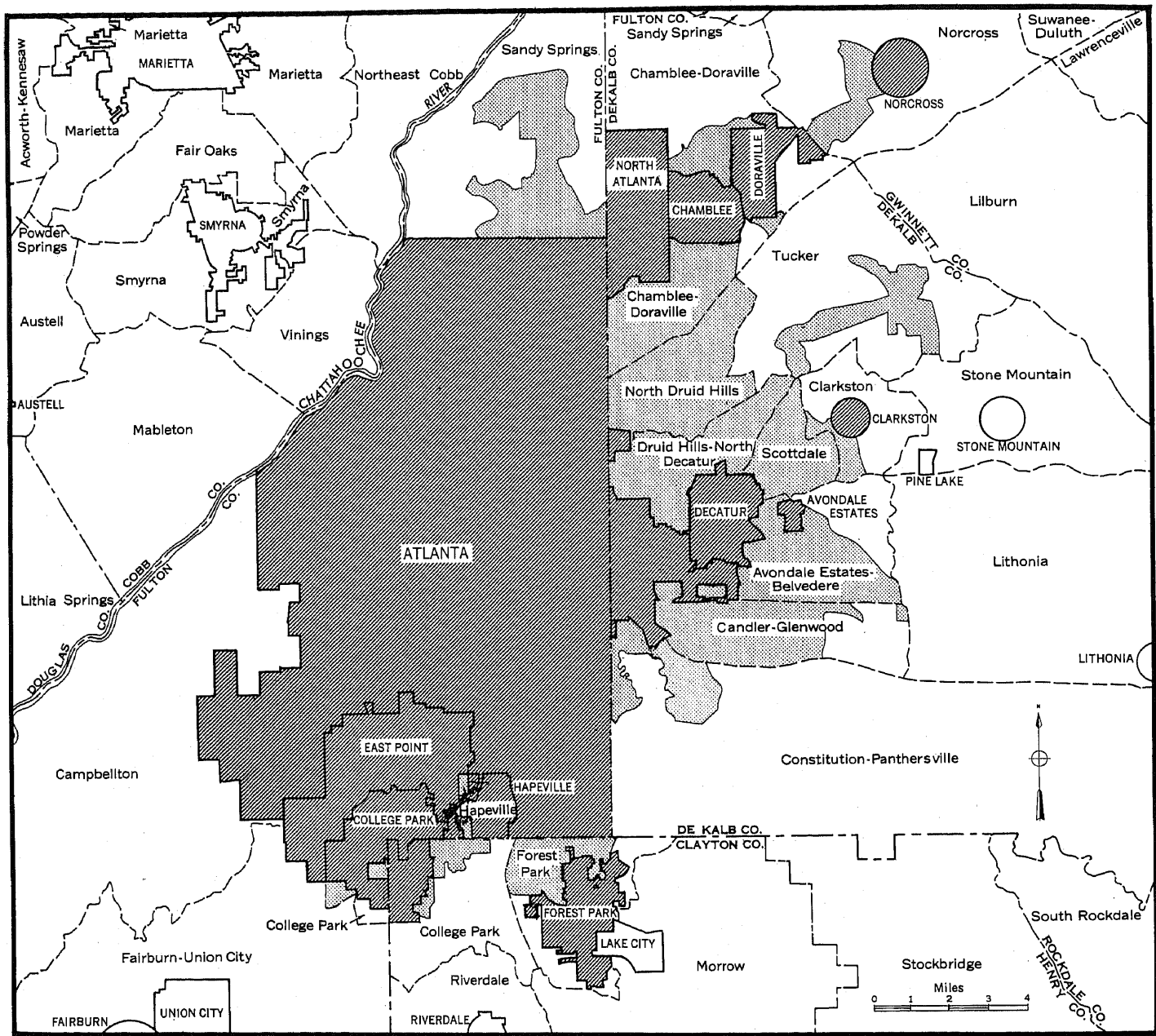
Metropolitan-nonmetropolitan residence	Total	Urban			Rural		
		Total	Central city or cities	Other urban territory	Total	Places of 1,000 to 2,500	Other rural territory
The State.....	3,943,116	2,180,236	949,759	1,230,477	1,762,880	179,921	1,582,959
In standard metropolitan statistical areas.....	1,814,069	1,469,472	949,759	519,713	344,597	27,369	317,228
Albany, Ga.....	75,680	58,353	55,890	2,463	17,327	...	17,327
Atlanta, Ga.....	1,017,188	837,447	487,455	349,992	179,741	23,087	156,654
Augusta, Ga.—S.C.....	213,561	110,870	70,626	40,244	24,731	...	24,731
Chattanooga, Tenn.—Ga.....	245,264	18,956	...	18,956	26,308	1,824	24,484
Columbus, Ga.—Ala.....	217,634	130,752	116,779	13,973	40,882	...	40,882
Macon, Ga.....	180,403	143,207	69,764	73,443	37,196	...	37,196
Savannah, Ga.....	188,299	169,887	149,245	20,642	18,412	2,458	15,954
Not in standard metropolitan statistical areas.....	2,129,047	710,764	...	710,764	1,418,283	152,552	1,265,731

<sup>1</sup> Part in State only; for entire area see table 11.

<sup>2</sup> Part in State only; for entire area see table 11 of the corresponding report for Tennessee, or table 31 of the U.S. Summary.



# ATLANTA URBANIZED AREA



**COMPONENTS OF URBANIZED AREA**

- Incorporated Places
- Unincorporated Area

**BOUNDARY SYMBOLS**

- State Line
- County Line
- Census County Division Line

Maps showing boundaries in detail are available at cost on request to the Bureau of the Census.



# URBANIZED AREAS—GEORGIA

